

## Datasheet for ABIN630012 **anti-EXOSC6 antibody (N-Term)**



[Go to Product page](#)

### 3 Images

#### Overview

Quantity:	100 µg
Target:	EXOSC6
Binding Specificity:	N-Term
Reactivity:	Human, Dog
Host:	Rabbit
Clonality:	Polyclonal
Conjugate:	This EXOSC6 antibody is un-conjugated
Application:	Western Blotting (WB), Immunohistochemistry (IHC)

#### Product Details

Immunogen:	EXOSC6 antibody was raised using the N terminal of EXOSC6 corresponding to a region with amino acids MPGDHRRIRGPEESQPPQLYAADEEEEAPGTRDPTLRPVPYARAGLLSQAK
Specificity:	EXOSC6 antibody was raised against the N terminal of EXOSC6
Purification:	Purified

#### Target Details

Target:	EXOSC6
Alternative Name:	EXOSC6 ( <a href="#">EXOSC6 Products</a> )
Background:	EXOSC6 constitutes one of the subunits of the multisubunit particle called exosome, which mediates mRNA degradation. The composition of human exosome is similar to its yeast counterpart. This protein is homologous to the yeast Mtr3 protein. Its exact function is not

## Target Details

---

known, however, it has been shown using a cell-free RNA decay system that the exosome is required for rapid degradation of unstable mRNAs containing AU-rich elements (AREs), but not for poly(A) shortening.

Molecular Weight: 30 kDa (MW of target protein)

Pathways: [Regulation of Leukocyte Mediated Immunity](#), [Positive Regulation of Immune Effector Process](#), [Production of Molecular Mediator of Immune Response](#)

## Application Details

---

Application Notes: WB: 5 µg/mL, IHC: 4-8 µg/mL  
Optimal conditions should be determined by the investigator.

Comment: EXOSC6 Blocking Peptide, catalog no. 33R-6278, is also available for use as a blocking control in assays to test for specificity of this EXOSC6 antibody

Restrictions: For Research Use only

## Handling

---

Format: Lyophilized

Reconstitution: Lyophilized powder. Add distilled water for a 1 mg/mL concentration of EXOSC6 antibody in PBS

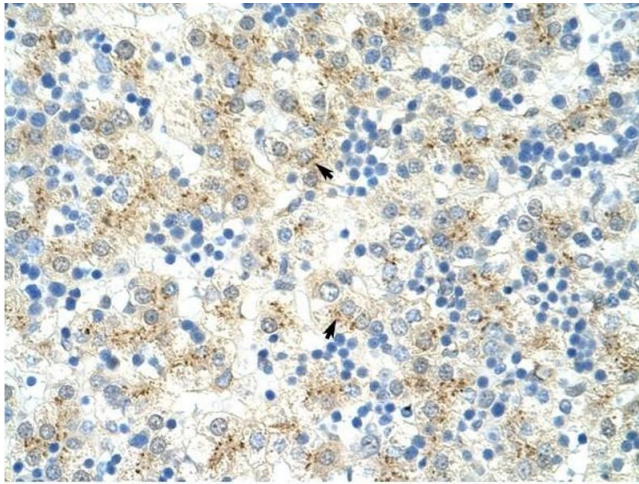
Concentration: Lot specific

Buffer: PBS

Handling Advice: Avoid repeated freeze/thaw cycles.  
Dilute only prior to immediate use.

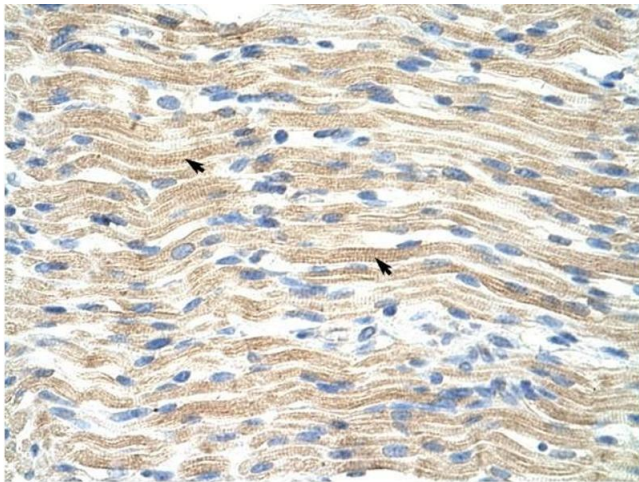
Storage: 4 °C/-20 °C

Storage Comment: Store at 2-8 °C for short periods. For longer periods of storage, store at -20 °C.



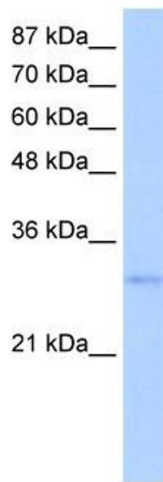
#### Immunohistochemistry

**Image 1.** EXOSC6 antibody was used for immunohistochemistry at a concentration of 4-8 ug/ml to stain Hepatocytes (arrows) in Human Liver. Magnification is at 400X



#### Immunohistochemistry

**Image 2.** EXOSC6 antibody was used for immunohistochemistry at a concentration of 4-8 ug/ml to stain Skeletal muscle cells (arrows) in Human Muscle. Magnification is at 400X.



#### Western Blotting

**Image 3.** EXOSC6 antibody used at 5 ug/ml to detect target protein.