

Datasheet for ABIN630013 **anti-RPL9 antibody (C-Term)**



[Go to Product page](#)

1 Image

Overview

Quantity:	100 µg
Target:	RPL9
Binding Specificity:	C-Term
Reactivity:	Human, Mouse, Rat, Dog, Zebrafish (Danio rerio)
Host:	Rabbit
Clonality:	Polyclonal
Conjugate:	This RPL9 antibody is un-conjugated
Application:	Western Blotting (WB)

Product Details

Immunogen:	RPL9 antibody was raised using the C terminal of RPL9 corresponding to a region with amino acids GVACSVSQAQKDELILEGNDIELVSNAAALIQATTVKNKDIRKFLDGIY
Specificity:	RPL9 antibody was raised against the C terminal of RPL9
Purification:	Purified

Target Details

Target:	RPL9
Alternative Name:	RPL9 (RPL9 Products)
Background:	RPL9 is a ribosomal protein that is a component of the 60S subunit. RPL9 belongs to the L6P family of ribosomal proteins. It is located in the cytoplasm. As is typical for genes encoding ribosomal proteins, there are multiple processed pseudogenes of this gene dispersed through

Target Details

the genome. Ribosomes, the organelles that catalyze protein synthesis, consist of a small 40S subunit and a large 60S subunit. Together these subunits are composed of 4 RNA species and approximately 80 structurally distinct proteins.

Molecular Weight: 21 kDa (MW of target protein)

Application Details

Application Notes: WB: 1.25 µg/mL
Optimal conditions should be determined by the investigator.

Comment: RPL9 Blocking Peptide, catalog no. 33R-3626, is also available for use as a blocking control in assays to test for specificity of this RPL9 antibody

Restrictions: For Research Use only

Handling

Format: Lyophilized

Reconstitution: Lyophilized powder. Add distilled water for a 1 mg/mL concentration of RPL9 antibody in PBS

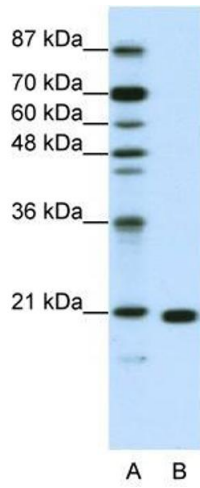
Concentration: Lot specific

Buffer: PBS

Handling Advice: Avoid repeated freeze/thaw cycles.
Dilute only prior to immediate use.

Storage: 4 °C/-20 °C

Storage Comment: Store at 2-8 °C for short periods. For longer periods of storage, store at -20 °C.



Western Blotting

Image 1. RPL9 antibody used at 1.25 ug/ml to detect target protein.