

Datasheet for ABIN630014 **anti-RPL6 antibody (N-Term)**



[Go to Product page](#)

1 Image

Overview

Quantity:	100 µg
Target:	RPL6
Binding Specificity:	N-Term
Reactivity:	Human, Dog
Host:	Rabbit
Clonality:	Polyclonal
Conjugate:	This RPL6 antibody is un-conjugated
Application:	Western Blotting (WB)

Product Details

Immunogen:	RPL6 antibody was raised using the N terminal of RPL6 corresponding to a region with amino acids AGEKVEKPDTKEKKPEAKKVDAGGKVKKGNLKAKKPKKGKPHCSRNPVLV
Specificity:	RPL6 antibody was raised against the N terminal of RPL6
Purification:	Purified

Target Details

Target:	RPL6
Alternative Name:	RPL6 (RPL6 Products)
Background:	RPL6 is a ribosomal protein that is a component of the 60S subunit. RPL6 belongs to the L6E family of ribosomal proteins. It is located in the cytoplasm. The protein can bind specifically to domain C of the tax-responsive enhancer element of human T-cell leukemia virus type 1, and it

Target Details

has been suggested that the protein may participate in tax-mediated transactivation of transcription. As is typical for genes encoding ribosomal proteins, there are multiple processed pseudogenes of this gene dispersed through the genome. Ribosomes, the organelles that catalyze protein synthesis, consist of a small 40S subunit and a large 60S subunit.

Molecular Weight: 32 kDa (MW of target protein)

Application Details

Application Notes: WB: 2.5 µg/mL
Optimal conditions should be determined by the investigator.

Comment: RPL6 Blocking Peptide, catalog no. 33R-1193, is also available for use as a blocking control in assays to test for specificity of this RPL6 antibody

Restrictions: For Research Use only

Handling

Format: Lyophilized

Reconstitution: Lyophilized powder. Add distilled water for a 1 mg/mL concentration of RPL6 antibody in PBS

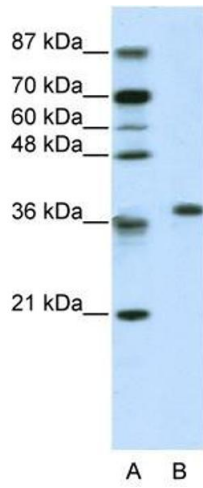
Concentration: Lot specific

Buffer: PBS

Handling Advice: Avoid repeated freeze/thaw cycles.
Dilute only prior to immediate use.

Storage: 4 °C/-20 °C

Storage Comment: Store at 2-8 °C for short periods. For longer periods of storage, store at -20 °C.



Western Blotting

Image 1. RPL6 antibody used at 2.5 ug/ml to detect target protein.