

## Datasheet for ABIN630015 **anti-RPLP0 antibody (Middle Region)**



[Go to Product page](#)

### 1 Image

#### Overview

Quantity:	100 µg
Target:	RPLP0
Binding Specificity:	Middle Region
Reactivity:	Human, Dog
Host:	Rabbit
Clonality:	Polyclonal
Conjugate:	This RPLP0 antibody is un-conjugated
Application:	Western Blotting (WB)

#### Product Details

Immunogen:	RPLP0 antibody was raised using the middle region of RPLP0 corresponding to a region with amino acids PFSFGLVIQQVFDNGSIYNPEVLDITEETLHSRFLEGVRNVASVCLQIGY
Specificity:	RPLP0 antibody was raised against the middle region of RPLP0
Purification:	Purified

#### Target Details

Target:	RPLP0
Alternative Name:	RPLP0 ( <a href="#">RPLP0 Products</a> )
Background:	Ribosomes, the organelles that catalyze protein synthesis, consist of a small 40S subunit and a large 60S subunit. Together these subunits are composed of 4 RNA species and approximately 80 structurally distinct proteins. The ribosomal protein is a component of the 60S subunit. The

## Target Details

---

protein, which is the functional equivalent of the E. coli L10 ribosomal protein, belongs to the L10P family of ribosomal proteins. It is a neutral phosphoprotein with a C-terminal end that is nearly identical to the C-terminal ends of the acidic ribosomal phosphoproteins P1 and P2.

Molecular Weight: 35 kDa (MW of target protein)

## Application Details

---

Application Notes: WB: 2.5 µg/mL  
Optimal conditions should be determined by the investigator.

Comment: RPLP0 Blocking Peptide, catalog no. 33R-7085, is also available for use as a blocking control in assays to test for specificity of this RPLP0 antibody

Restrictions: For Research Use only

## Handling

---

Format: Lyophilized

Reconstitution: Lyophilized powder. Add distilled water for a 1 mg/mL concentration of RPLP0 antibody in PBS

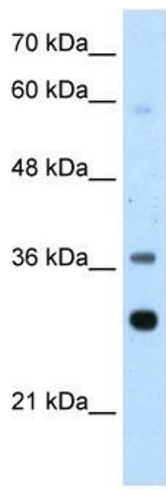
Concentration: Lot specific

Buffer: PBS

Handling Advice: Avoid repeated freeze/thaw cycles.  
Dilute only prior to immediate use.

Storage: 4 °C/-20 °C

Storage Comment: Store at 2-8 °C for short periods. For longer periods of storage, store at -20 °C.



### Western Blotting

**Image 1.** RPLP0 antibody used at 2.5 ug/ml to detect target protein.