

Datasheet for ABIN630019 anti-NUDT21 antibody



[Go to Product page](#)

2 Images

Overview

Quantity:	100 µg
Target:	NUDT21
Reactivity:	Human, Mouse, Rat, Dog, Zebrafish (Danio rerio)
Host:	Rabbit
Clonality:	Polyclonal
Conjugate:	This NUDT21 antibody is un-conjugated
Application:	Western Blotting (WB), Immunohistochemistry (IHC)

Product Details

Immunogen:	NUDT21 antibody was raised using a synthetic peptide corresponding to a region with amino acids TGWPRGVTQFGNKYIQQTKPLTLERTINLYPLTNYTFGTKEPLYEKDSSV
Purification:	Purified

Target Details

Target:	NUDT21
Alternative Name:	NUDT21 (NUDT21 Products)
Background:	NUDT21 is one subunit of a cleavage factor required for 3' RNA cleavage and polyadenylation processing. The interaction of the protein with the RNA is one of the earliest steps in the assembly of the 3' end processing complex and facilitates the recruitment of other processing factors.
Molecular Weight:	25 kDa (MW of target protein)

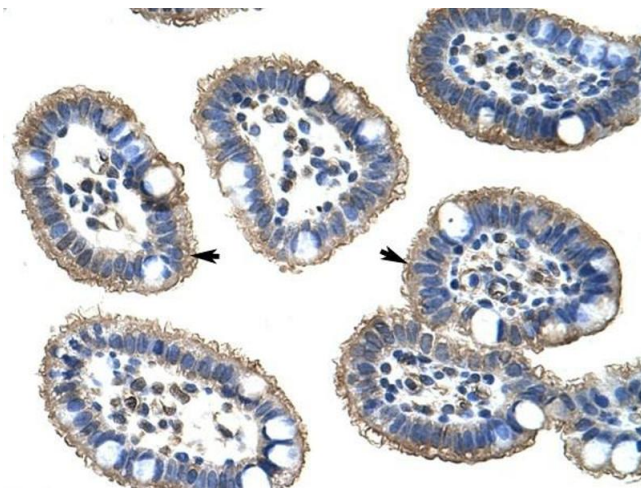
Application Details

Application Notes:	WB: 1.25 µg/mL, IHC: 4-8 µg/mL Optimal conditions should be determined by the investigator.
Comment:	NUDT21 Blocking Peptide, catalog no. 33R-9098, is also available for use as a blocking control in assays to test for specificity of this NUDT21 antibody
Restrictions:	For Research Use only

Handling

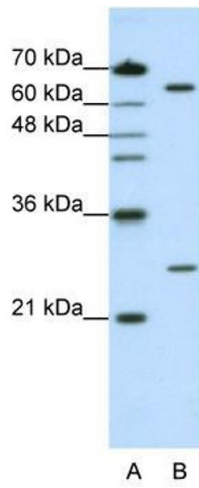
Format:	Lyophilized
Reconstitution:	Lyophilized powder. Add distilled water for a 1 mg/mL concentration of NUDT21 antibody in PBS
Concentration:	Lot specific
Buffer:	PBS
Handling Advice:	Avoid repeated freeze/thaw cycles.
Storage:	4 °C/-20 °C
Storage Comment:	Store at 2-8 °C for short periods. For longer periods of storage, store at -20 °C.

Images



Immunohistochemistry

Image 1. NUDT21 antibody was used for immunohistochemistry at a concentration of 4-8 µg/ml to stain Epithelial cells of intestinal villus (arrows) in Human Intestine. Magnification is at 400X



Western Blotting

Image 2. NUDT21 antibody used at 1.25 ug/ml to detect target protein.