

Datasheet for ABIN630020
anti-CPSF6 antibody (Middle Region)



[Go to Product page](#)

2 Images

Overview

Quantity:	100 µg
Target:	CPSF6
Binding Specificity:	Middle Region
Reactivity:	Human, Mouse, Rat, Dog
Host:	Rabbit
Clonality:	Polyclonal
Conjugate:	This CPSF6 antibody is un-conjugated
Application:	Western Blotting (WB), Immunohistochemistry (IHC)

Product Details

Immunogen:	CPSF6 antibody was raised using the middle region of CPSF6 corresponding to a region with amino acids PPLAGPPNRGDRPPPPVLFPGQPFQPLGGLPPGPPPPVPGYGGPPGPP
Specificity:	CPSF6 antibody was raised against the middle region of CPSF6
Purification:	Purified

Target Details

Target:	CPSF6
Alternative Name:	CPSF6 (CPSF6 Products)
Background:	CPSF6 is one subunit of a cleavage factor required for 3' RNA cleavage and polyadenylation processing. The interaction of the protein with the RNA is one of the earliest steps in the assembly of the 3' end processing complex and facilitates the recruitment of other processing

Target Details

factors. The cleavage factor complex is composed of four polypeptides.

Molecular Weight: 61 kDa (MW of target protein)

Application Details

Application Notes: WB: 0.3125 µg/mL, IHC: 16 µg/mL
Optimal conditions should be determined by the investigator.

Comment: CPSF6 Blocking Peptide, catalog no. 33R-7262, is also available for use as a blocking control in assays to test for specificity of this CPSF6 antibody

Restrictions: For Research Use only

Handling

Format: Lyophilized

Reconstitution: Lyophilized powder. Add distilled water for a 1 mg/mL concentration of CPSF6 antibody in PBS

Concentration: Lot specific

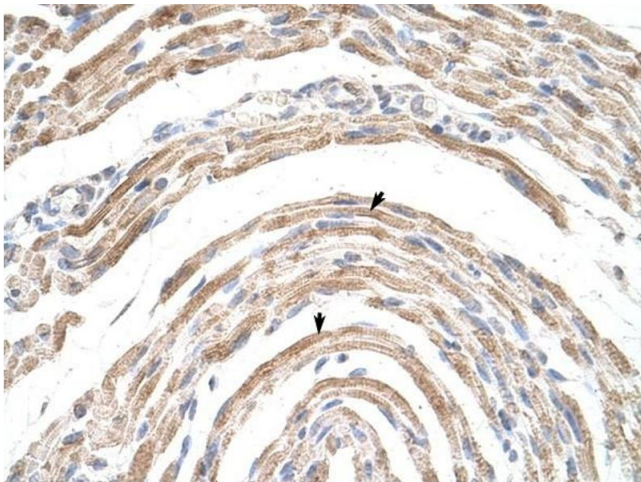
Buffer: PBS

Handling Advice: Avoid repeated freeze/thaw cycles.
Dilute only prior to immediate use.

Storage: 4 °C/-20 °C

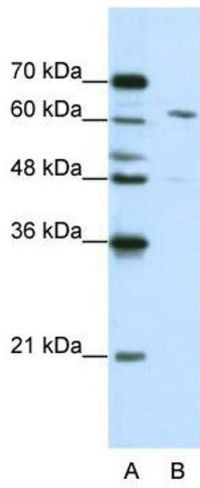
Storage Comment: Store at 2-8 °C for short periods. For longer periods of storage, store at -20 °C.

Images



Immunohistochemistry

Image 1. CPSF6 antibody was used for immunohistochemistry at a concentration of 16.0 µg/ml to stain Skeletal muscle cells (arrows) in Human Muscle. Magnification is at 400X



Western Blotting

Image 2. CPSF6 antibody used at 0.3125 ug/ml to detect target protein.