

## Datasheet for ABIN630021 **anti-PRP6/ANT-1 antibody**



[Go to Product page](#)

### 1 Image

#### Overview

Quantity:	100 µg
Target:	PRP6/ANT-1 (PRPF6)
Reactivity:	Human, Mouse, Rat
Host:	Rabbit
Clonality:	Polyclonal
Conjugate:	This PRP6/ANT-1 antibody is un-conjugated
Application:	Western Blotting (WB)

#### Product Details

Immunogen:	PRPF6 antibody was raised using a synthetic peptide corresponding to a region with amino acids FWSQRKITKAREWFHRTVKIDSDLGDAWAFFYKFELQHGTEEQEEVRKR
Purification:	Purified

#### Target Details

Target:	PRP6/ANT-1 (PRPF6)
Alternative Name:	PRPF6 ( <a href="#">PRPF6 Products</a> )
Background:	PRPF6 appears to be involved in pre-mRNA splicing, possibly acting as a bridging factor between U5 and U4/U6 snRNPs in formation of the spliceosome. PRPF6 also can bind androgen receptor, providing a link between transcriptional activation and splicing.
Molecular Weight:	104 kDa (MW of target protein)
Pathways:	<a href="#">Ribonucleoprotein Complex Subunit Organization</a> , <a href="#">Proton Transport</a> , <a href="#">Dicarboxylic Acid</a>

## Target Details

Transport

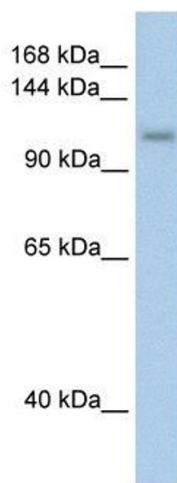
## Application Details

Application Notes:	WB: 2.5 µg/mL Optimal conditions should be determined by the investigator.
Comment:	PRPF6 Blocking Peptide, catalog no. 33R-3130, is also available for use as a blocking control in assays to test for specificity of this PRPF6 antibody
Restrictions:	For Research Use only

## Handling

Format:	Lyophilized
Reconstitution:	Lyophilized powder. Add distilled water for a 1 mg/mL concentration of PRPF6 antibody in PBS
Concentration:	Lot specific
Buffer:	PBS
Handling Advice:	Avoid repeated freeze/thaw cycles.
Storage:	4 °C/-20 °C
Storage Comment:	Store at 2-8 °C for short periods. For longer periods of storage, store at -20 °C.

## Images



### Western Blotting

**Image 1.** PRPF6 antibody used at 2.5 ug/ml to detect target protein.