

Datasheet for ABIN630025
anti-MIF4GD antibody (C-Term)



[Go to Product page](#)

2 Images

Overview

Quantity:	100 µg
Target:	MIF4GD
Binding Specificity:	C-Term
Reactivity:	Human, Mouse, Dog, Rat
Host:	Rabbit
Clonality:	Polyclonal
Conjugate:	This MIF4GD antibody is un-conjugated
Application:	Western Blotting (WB), Immunohistochemistry (IHC)

Product Details

Immunogen:	MIF4 GD antibody was raised using the C terminal of MIF4 D corresponding to a region with amino acids LFVLIRDGFLPTGLSSLAQLLLLLEIIIFRAAGWKTPAAHKYYYSEVSD
Specificity:	MIF4 GD antibody was raised against the C terminal of MIF4 D
Purification:	Purified

Target Details

Target:	MIF4GD
Alternative Name:	MIF4GD (MIF4GD Products)
Background:	MIF4GD is a protein which contains an MIF4G domain.
Molecular Weight:	28 kDa (MW of target protein)

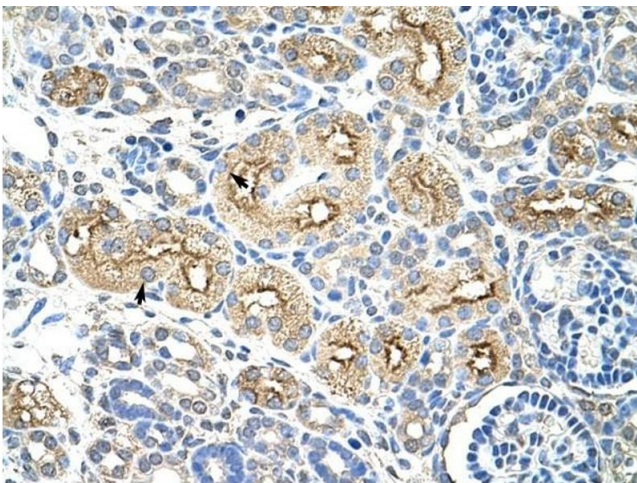
Application Details

Application Notes:	WB: 1.25 µg/mL, IHC: 4-8 µg/mL Optimal conditions should be determined by the investigator.
Comment:	MIF4GD Blocking Peptide, catalog no. 33R-4954, is also available for use as a blocking control in assays to test for specificity of this MIF4GD antibody
Restrictions:	For Research Use only

Handling

Format:	Lyophilized
Reconstitution:	Lyophilized powder. Add distilled water for a 1 mg/mL concentration of MIF0 D antibody in PBS
Concentration:	Lot specific
Buffer:	PBS
Handling Advice:	Avoid repeated freeze/thaw cycles. Dilute only prior to immediate use.
Storage:	4 °C/-20 °C
Storage Comment:	Store at 2-8 °C for short periods. For longer periods of storage, store at -20 °C.

Images



Immunohistochemistry

Image 1. MIF4GD antibody was used for immunohistochemistry at a concentration of 4-8 µg/ml to stain Epithelial cells of renal tubule (arrows) in Human Kidney. Magnification is at 400X



Western Blotting

Image 2. MIF4GD antibody used at 1.25 ug/ml to detect target protein.