

Datasheet for ABIN630027
anti-RBM4B antibody (C-Term)



[Go to Product page](#)

2 Images

Overview

Quantity:	100 µg
Target:	RBM4B
Binding Specificity:	C-Term
Reactivity:	Human
Host:	Rabbit
Clonality:	Polyclonal
Conjugate:	This RBM4B antibody is un-conjugated
Application:	Western Blotting (WB), Immunohistochemistry (IHC)

Product Details

Immunogen:	RBM4 B antibody was raised using the C terminal of RBM4 corresponding to a region with amino acids AAAATTSSYYGRDRSPLRRAAAMLPTVGEYGYGPESELSQASAATRNSL
Specificity:	RBM4 B antibody was raised against the C terminal of RBM4
Purification:	Purified

Target Details

Target:	RBM4B
Alternative Name:	RBM4B (RBM4B Products)
Background:	RBM4B contains 1 CCHC-type zinc finger and 2 RRM (RNA recognition motif) domains. It may play a role in alternative splice site selection during pre-mRNA processing.

Target Details

Molecular Weight: 39 kDa (MW of target protein)

Pathways: [Photoperiodism](#)

Application Details

Application Notes: WB: 2.5 µg/mL, IHC: 4-8 µg/mL
Optimal conditions should be determined by the investigator.

Comment: RBM4B Blocking Peptide, catalog no. 33R-1001, is also available for use as a blocking control in assays to test for specificity of this RBM4B antibody

Restrictions: For Research Use only

Handling

Format: Lyophilized

Reconstitution: Lyophilized powder. Add distilled water for a 1 mg/mL concentration of RBM0 antibody in PBS

Concentration: Lot specific

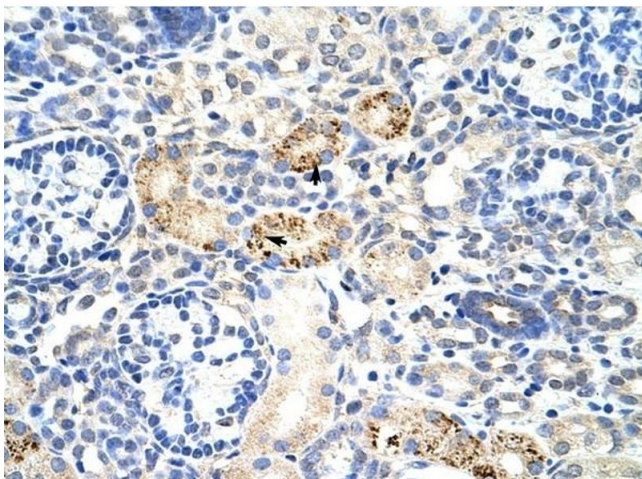
Buffer: PBS

Handling Advice: Avoid repeated freeze/thaw cycles.
Dilute only prior to immediate use.

Storage: 4 °C/-20 °C

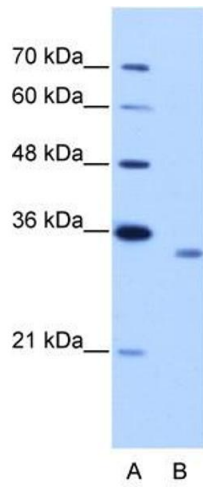
Storage Comment: Store at 2-8 °C for short periods. For longer periods of storage, store at -20 °C.

Images



Immunohistochemistry

Image 1. RBM4B antibody was used for immunohistochemistry at a concentration of 4-8 µg/ml to stain Epithelial cells of renal tubule (arrows) in Human Kidney. Magnification is at 400X



Western Blotting

Image 2. RBM4B antibody used at 2.5 ug/ml to detect target protein.