

Datasheet for ABIN630028
anti-EIF2A antibody (C-Term)



[Go to Product page](#)

2 Images

Overview

Quantity:	100 µg
Target:	EIF2A
Binding Specificity:	C-Term
Reactivity:	Human, Dog
Host:	Rabbit
Clonality:	Polyclonal
Conjugate:	This EIF2A antibody is un-conjugated
Application:	Western Blotting (WB), Immunohistochemistry (IHC)

Product Details

Immunogen:	EIF2 A antibody was raised using the C terminal of EIF2 corresponding to a region with amino acids DKSPDLAPTPAPQSTPRNTVSQSISGDPEIDKKIKNLKKLKAIEQLKEQ
Specificity:	EIF2 A antibody was raised against the C terminal of EIF2
Purification:	Purified

Target Details

Target:	EIF2A
Alternative Name:	EIF2A (EIF2A Products)
Background:	EIF2A is a 65 kDa protein that catalyzes the formation of puromycin-sensitive 80S preinitiation complexes.

Target Details

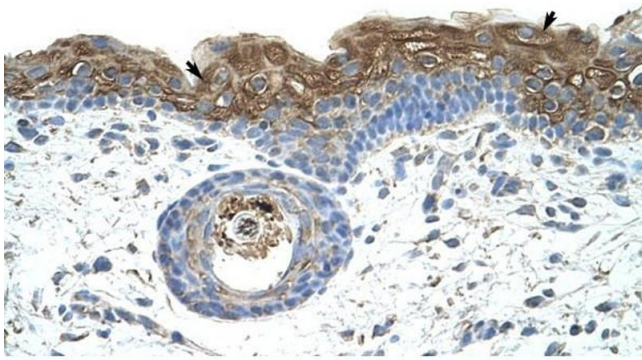
Molecular Weight:	64 kDa (MW of target protein)
Pathways:	Ribonucleoprotein Complex Subunit Organization , ER-Nucleus Signaling , Hepatitis C , Methionine Biosynthetic Process , Ribosome Assembly

Application Details

Application Notes:	WB: 2.5 µg/mL, IHC: 4-8 µg/mL Optimal conditions should be determined by the investigator.
Comment:	EIF2A Blocking Peptide, catalog no. 33R-2031, is also available for use as a blocking control in assays to test for specificity of this EIF2A antibody
Restrictions:	For Research Use only

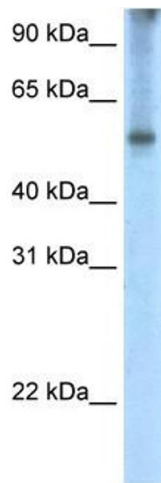
Handling

Format:	Lyophilized
Reconstitution:	Lyophilized powder. Add distilled water for a 1 mg/mL concentration of EIF0 antibody in PBS
Concentration:	Lot specific
Buffer:	PBS
Handling Advice:	Avoid repeated freeze/thaw cycles. Dilute only prior to immediate use.
Storage:	4 °C/-20 °C
Storage Comment:	Store at 2-8 °C for short periods. For longer periods of storage, store at -20 °C.



Immunohistochemistry

Image 1. EIF2A antibody was used for immunohistochemistry at a concentration of 4-8 ug/ml to stain Epidermal cells (arrows) in Human Skin. Magnification is at 400X



Western Blotting

Image 2. EIF2A antibody used at 2.5 ug/ml to detect target protein.