

Datasheet for ABIN630029

**anti-THO Complex 3 antibody (Middle Region)**[Go to Product page](#)**3** Images

## Overview

Quantity:	100 µg
Target:	THO Complex 3 (THOC3)
Binding Specificity:	Middle Region
Reactivity:	Human, Mouse, Rat, Dog
Host:	Rabbit
Clonality:	Polyclonal
Conjugate:	This THO Complex 3 antibody is un-conjugated
Application:	Western Blotting (WB), Immunohistochemistry (IHC)

## Product Details

Immunogen:	THOC3 antibody was raised using the middle region of THOC3 corresponding to a region with amino acids PDGQTIAVGNKDDVVTIFIDAKTHRSKAEQFKFEVNEISWNNNDNNMFFLT
Specificity:	THOC3 antibody was raised against the middle region of THOC3
Purification:	Purified

## Target Details

Target:	THO Complex 3 (THOC3)
Alternative Name:	THOC3 ( <a href="#">THOC3 Products</a> )
Background:	THOC3 is part of the TREX (transcription/export) complex, which includes THO2, HPR1, ALY, and UAP56.

## Target Details

---

Molecular Weight: 39 kDa (MW of target protein)

## Application Details

---

Application Notes: WB: 0.25 µg/mL, IHC: 4-8 µg/mL  
Optimal conditions should be determined by the investigator.

Comment: THOC3 Blocking Peptide, catalog no. 33R-7013, is also available for use as a blocking control in assays to test for specificity of this THOC3 antibody

Restrictions: For Research Use only

## Handling

---

Format: Lyophilized

Reconstitution: Lyophilized powder. Add distilled water for a 1 mg/mL concentration of THOC3 antibody in PBS

Concentration: Lot specific

Buffer: PBS

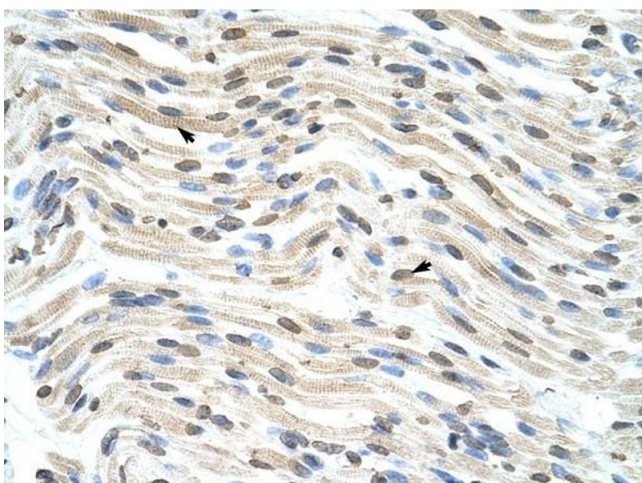
Handling Advice: Avoid repeated freeze/thaw cycles.  
Dilute only prior to immediate use.

Storage: 4 °C/-20 °C

Storage Comment: Store at 2-8 °C for short periods. For longer periods of storage, store at -20 °C.

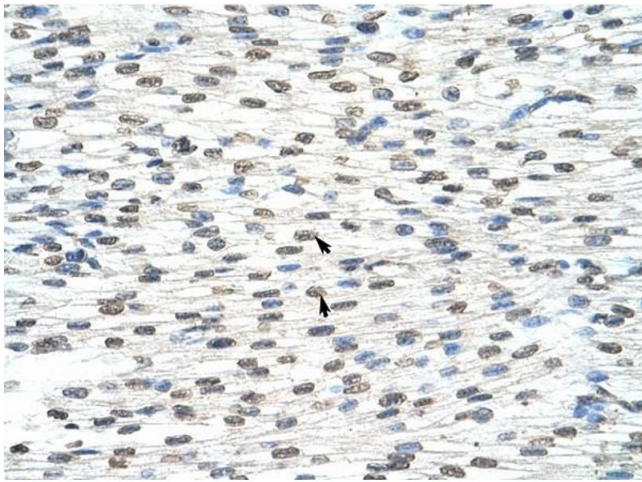
## Images

---



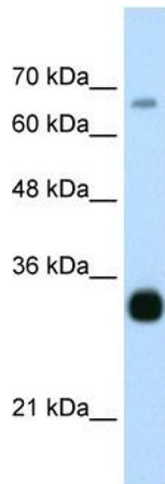
### Immunohistochemistry

**Image 1.** THOC3 antibody was used for immunohistochemistry at a concentration of 4-8 ug/ml to stain Myocardial cells (arrows) in Human Heart. Magnification is at 400X



### Immunohistochemistry

**Image 2.** THOC3 antibody was used for immunohistochemistry at a concentration of 4-8 ug/ml to stain Myocardial cells (arrows) in Human Heart. Magnification is at 400X.



### Western Blotting

**Image 3.** THOC3 antibody used at 0.25 ug/ml to detect target protein.