

Datasheet for ABIN630030
anti-RAVER1 antibody (N-Term)



[Go to Product page](#)

2 Images

Overview

Quantity:	100 µg
Target:	RAVER1
Binding Specificity:	N-Term
Reactivity:	Human
Host:	Rabbit
Clonality:	Polyclonal
Conjugate:	This RAVER1 antibody is un-conjugated
Application:	Western Blotting (WB), Immunohistochemistry (IHC)

Product Details

Immunogen:	RAVER1 antibody was raised using the N terminal of RAVER1 corresponding to a region with amino acids VTHRPPLSPKSGAEVEAGDAAERRAPEEELPLDPPEIRKRLEHTERQFR
Specificity:	RAVER1 antibody was raised against the N terminal of RAVER1
Purification:	Purified

Target Details

Target:	RAVER1
Alternative Name:	RAVER1 (RAVER1 Products)
Background:	RAVER1 contains 3 RRM (RNA recognition motif) domains. It cooperates with PTBP1 to modulate regulated alternative splicing events and promotes exon skipping.

Target Details

Molecular Weight: 67 kDa (MW of target protein)

Application Details

Application Notes: WB: 1.25 µg/mL, IHC: 4-8 µg/mL
Optimal conditions should be determined by the investigator.

Comment: RAVER1 Blocking Peptide, catalog no. 33R-9845, is also available for use as a blocking control in assays to test for specificity of this RAVER1 antibody

Restrictions: For Research Use only

Handling

Format: Lyophilized

Reconstitution: Lyophilized powder. Add distilled water for a 1 mg/mL concentration of RAVER1 antibody in PBS

Concentration: Lot specific

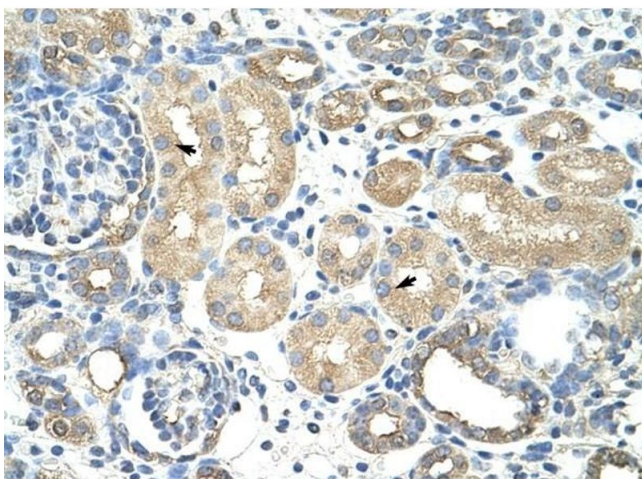
Buffer: PBS

Handling Advice: Avoid repeated freeze/thaw cycles.
Dilute only prior to immediate use.

Storage: 4 °C/-20 °C

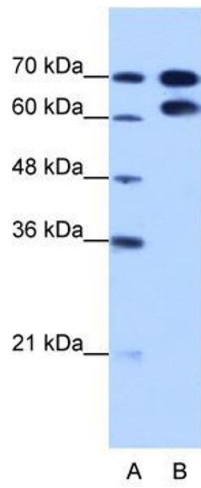
Storage Comment: Store at 2-8 °C for short periods. For longer periods of storage, store at -20 °C.

Images



Immunohistochemistry

Image 1. RAVER1 antibody was used for immunohistochemistry at a concentration of 4-8 ug/ml to stain Epithelial cells of renal tubule (arrows) in Human Kidney. Magnification is at 400X



Western Blotting

Image 2. RAVER1 antibody used at 1.25 ug/ml to detect target protein.