

Datasheet for ABIN630033
anti-RPUSD2 antibody (N-Term)



[Go to Product page](#)

2 Images

Overview

Quantity:	100 µg
Target:	RPUSD2
Binding Specificity:	N-Term
Reactivity:	Human, Mouse, Rat
Host:	Rabbit
Clonality:	Polyclonal
Conjugate:	This RPUSD2 antibody is un-conjugated
Application:	Western Blotting (WB), Immunohistochemistry (IHC)

Product Details

Immunogen:	RPUSD2 antibody was raised using the N terminal of RPUSD2 corresponding to a region with amino acids LKDNDFLRNTVHRHEPPVTAEPIRLLAENEDVVVVDKPSSIPVHPCGRFR
Specificity:	RPUSD2 antibody was raised against the N terminal of RPUSD2
Purification:	Purified

Target Details

Target:	RPUSD2
Alternative Name:	RPUSD2 (RPUSD2 Products)
Background:	RPUSD2 is involved in pseudouridine synthase activity and RNA binding.
Molecular Weight:	60 kDa (MW of target protein)

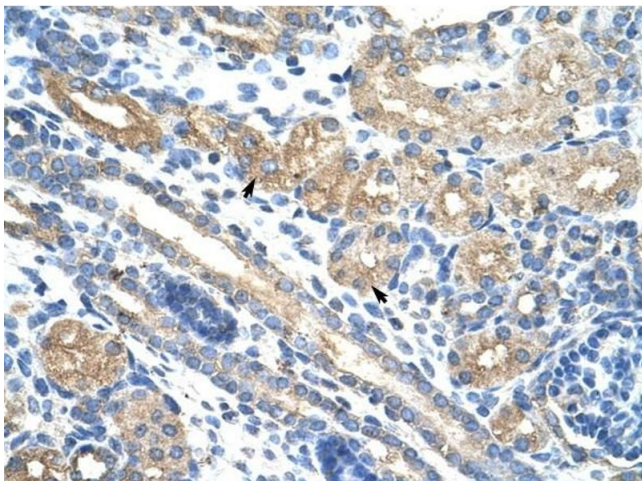
Application Details

Application Notes:	WB: 5 µg/mL, IHC: 4-8 µg/mL Optimal conditions should be determined by the investigator.
Comment:	RPUSD2 Blocking Peptide, catalog no. 33R-5078, is also available for use as a blocking control in assays to test for specificity of this RPUSD2 antibody
Restrictions:	For Research Use only

Handling

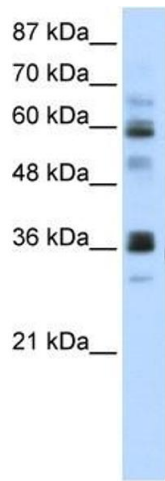
Format:	Lyophilized
Reconstitution:	Lyophilized powder. Add distilled water for a 1 mg/mL concentration of RPUSD2 antibody in PBS
Concentration:	Lot specific
Buffer:	PBS
Handling Advice:	Avoid repeated freeze/thaw cycles. Dilute only prior to immediate use.
Storage:	4 °C/-20 °C
Storage Comment:	Store at 2-8 °C for short periods. For longer periods of storage, store at -20 °C.

Images



Immunohistochemistry

Image 1. RPUSD2 antibody was used for immunohistochemistry at a concentration of 4-8 ug/ml to stain Epithelial cells of renal tubule (arrows) in Human Kidney. Magnification is at 400X



Western Blotting

Image 2. RPUSD2 antibody used at 5 ug/ml to detect target protein.