

Datasheet for ABIN630042
anti-NOVA2 antibody (N-Term)



[Go to Product page](#)

1 Image

Overview

Quantity:	100 µg
Target:	NOVA2
Binding Specificity:	N-Term
Reactivity:	Human, Zebrafish (Danio rerio)
Host:	Rabbit
Clonality:	Polyclonal
Conjugate:	This NOVA2 antibody is un-conjugated
Application:	Western Blotting (WB)

Product Details

Immunogen:	NOVA2 antibody was raised using the N terminal of NOVA2 corresponding to a region with amino acids MEPEAPDSRKRPLETPPEVVCTKRSNTGEEGEYFLKVLIPSYAAGSIIGK
Specificity:	NOVA2 antibody was raised against the N terminal of NOVA2
Purification:	Purified

Target Details

Target:	NOVA2
Alternative Name:	NOVA2 (NOVA2 Products)
Background:	NOVA2 may regulate RNA splicing or metabolism in a specific subset of developing neurons. It binds single strand RNA.

Target Details

Molecular Weight: 54 kDa (MW of target protein)

Application Details

Application Notes: WB: 1.25 µg/mL
Optimal conditions should be determined by the investigator.

Comment: NOVA2 Blocking Peptide, catalog no. 33R-5942, is also available for use as a blocking control in assays to test for specificity of this NOVA2 antibody

Restrictions: For Research Use only

Handling

Format: Lyophilized

Reconstitution: Lyophilized powder. Add distilled water for a 1 mg/mL concentration of NOVA2 antibody in PBS

Concentration: Lot specific

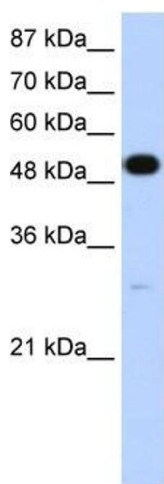
Buffer: PBS

Handling Advice: Avoid repeated freeze/thaw cycles.
Dilute only prior to immediate use.

Storage: 4 °C/-20 °C

Storage Comment: Store at 2-8 °C for short periods. For longer periods of storage, store at -20 °C.

Images



Western Blotting

Image 1. NOVA2 antibody used at 1.25 µg/ml to detect target protein.