

Datasheet for ABIN630044 **anti-RPL32 antibody (N-Term)**



[Go to Product page](#)

1 Image

Overview

Quantity:	100 µg
Target:	RPL32
Binding Specificity:	N-Term
Reactivity:	Human, Mouse, Rat, Dog
Host:	Rabbit
Clonality:	Polyclonal
Conjugate:	This RPL32 antibody is un-conjugated
Application:	Western Blotting (WB)

Product Details

Immunogen:	RPL32 antibody was raised using the N terminal of RPL32 corresponding to a region with amino acids AALRPLVKPKIVKKRRTKKFIRHQSDRYVKIKRNWRKPRGIDNRVRRRFRKG
Specificity:	RPL32 antibody was raised against the N terminal of RPL32
Purification:	Purified

Target Details

Target:	RPL32
Alternative Name:	RPL32 (RPL32 Products)
Background:	RPL32 is a ribosomal protein that is a component of the 60S subunit. RPL32 belongs to the L32E family of ribosomal proteins. It is located in the cytoplasm. Although some studies have mapped this gene to 3q13.3-q21, it is believed to map to 3p25-p24. As is typical for genes

Target Details

encoding ribosomal proteins, there are multiple processed pseudogenes of this gene dispersed through the genome.

Molecular Weight: 15 kDa (MW of target protein)

Application Details

Application Notes: WB: 2.5 µg/mL
Optimal conditions should be determined by the investigator.

Comment: RPL32 Blocking Peptide, catalog no. 33R-1035, is also available for use as a blocking control in assays to test for specificity of this RPL32 antibody

Restrictions: For Research Use only

Handling

Format: Lyophilized

Reconstitution: Lyophilized powder. Add distilled water for a 1 mg/mL concentration of RPL32 antibody in PBS

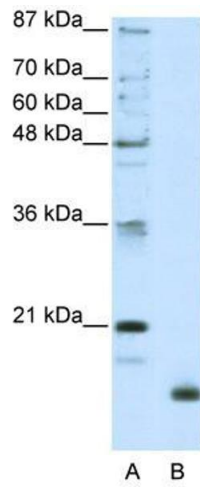
Concentration: Lot specific

Buffer: PBS

Handling Advice: Avoid repeated freeze/thaw cycles.
Dilute only prior to immediate use.

Storage: 4 °C/-20 °C

Storage Comment: Store at 2-8 °C for short periods. For longer periods of storage, store at -20 °C.



Western Blotting

Image 1. RPL32 antibody used at 2.5 ug/ml to detect target protein.