

Datasheet for ABIN630050
anti-DDX17 antibody



[Go to Product page](#)

2 Images

Overview

Quantity:	100 µg
Target:	DDX17
Reactivity:	Human, Dog
Host:	Rabbit
Clonality:	Polyclonal
Conjugate:	This DDX17 antibody is un-conjugated
Application:	Western Blotting (WB), Immunohistochemistry (IHC)

Product Details

Immunogen:	DDX17 antibody was raised using a synthetic peptide corresponding to a region with amino acids TSSANNPNLMYQDECRRRLRGVKDGGRRDSASYRDRSETDRAGYANGSGY
Purification:	Purified

Target Details

Target:	DDX17
Alternative Name:	DDX17 (DDX17 Products)
Background:	DEAD box proteins, characterized by the conserved motif Asp-Glu-Ala-Asp (DEAD), are putative RNA helicases. They are implicated in a number of cellular processes involving alteration of RNA secondary structure such as translation initiation, nuclear and mitochondrial splicing, and ribosome and spliceosome assembly. Based on their distribution patterns, some members of this family are believed to be involved in embryogenesis, spermatogenesis, and cellular growth

Target Details

and division.

Molecular Weight: 60 kDa (MW of target protein)

Pathways: [Intracellular Steroid Hormone Receptor Signaling Pathway](#), [Regulation of Intracellular Steroid Hormone Receptor Signaling](#), [Regulation of Muscle Cell Differentiation](#)

Application Details

Application Notes: WB: 1.25 µg/mL, IHC: 4-8 µg/mL
Optimal conditions should be determined by the investigator.

Comment: DDX17 Blocking Peptide, catalog no. 33R-9297, is also available for use as a blocking control in assays to test for specificity of this DDX17 antibody

Restrictions: For Research Use only

Handling

Format: Lyophilized

Reconstitution: Lyophilized powder. Add distilled water for a 1 mg/mL concentration of DDX17 antibody in PBS

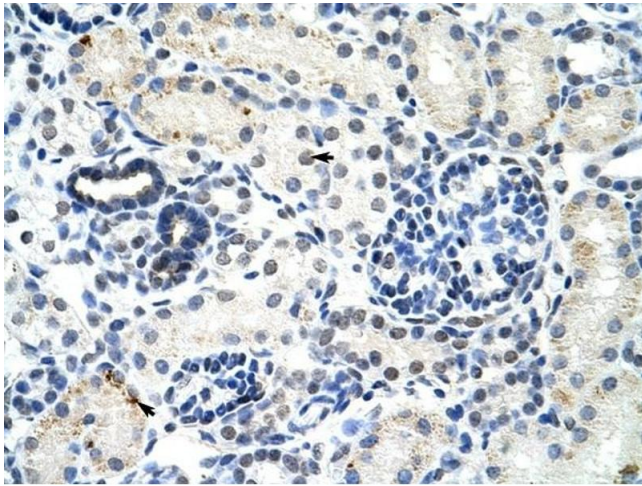
Concentration: Lot specific

Buffer: PBS

Handling Advice: Avoid repeated freeze/thaw cycles.

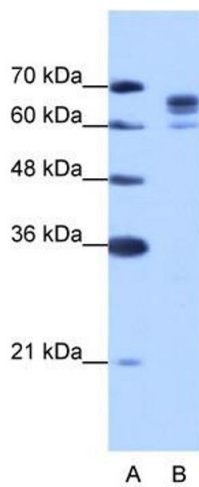
Storage: 4 °C/-20 °C

Storage Comment: Store at 2-8 °C for short periods. For longer periods of storage, store at -20 °C.



Immunohistochemistry

Image 1. DDX17 antibody was used for immunohistochemistry at a concentration of 4-8 ug/ml to stain Epithelial cells of renal tubule (arrows) in Human Kidney. Magnification is at 400X



Western Blotting

Image 2. DDX17 antibody used at 1.25 ug/ml to detect target protein.