

Datasheet for ABIN630054  
**anti-TMED4 antibody (N-Term)**

2 Images



[Go to Product page](#)

## Overview

Quantity:	100 µg
Target:	TMED4
Binding Specificity:	N-Term
Reactivity:	Human
Host:	Rabbit
Clonality:	Polyclonal
Conjugate:	This TMED4 antibody is un-conjugated
Application:	Western Blotting (WB), Immunohistochemistry (IHC)

## Product Details

Immunogen:	TMED4 antibody was raised using the N terminal of TMED4 corresponding to a region with amino acids LRAMGRQALLLLALCATGAQGLYFHIGETEKRCFIEEIPDETMVIGNYRT
Specificity:	TMED4 antibody was raised against the N terminal of TMED4
Purification:	Purified

## Target Details

Target:	TMED4
Alternative Name:	TMED4 ( <a href="#">TMED4 Products</a> )
Background:	TMED4 contains 1 GOLD domain and belongs to the EMP24/GP25L family. The function remains unknown.

## Target Details

Molecular Weight: 25 kDa (MW of target protein)

## Application Details

Application Notes: WB: 1.25 µg/mL, IHC: 4-8 µg/mL  
Optimal conditions should be determined by the investigator.

Comment: TMED4 Blocking Peptide, catalog no. 33R-5347, is also available for use as a blocking control in assays to test for specificity of this TMED4 antibody

Restrictions: For Research Use only

## Handling

Format: Lyophilized

Reconstitution: Lyophilized powder. Add distilled water for a 1 mg/mL concentration of TMED4 antibody in PBS

Concentration: Lot specific

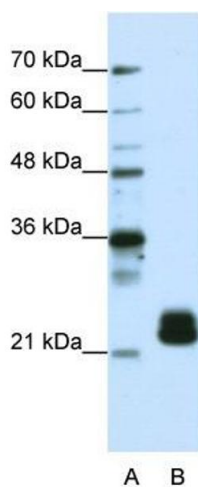
Buffer: PBS

Handling Advice: Avoid repeated freeze/thaw cycles.  
Dilute only prior to immediate use.

Storage: 4 °C/-20 °C

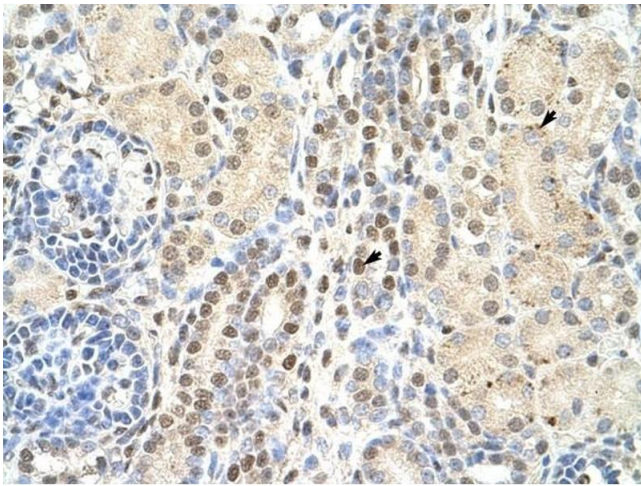
Storage Comment: Store at 2-8 °C for short periods. For longer periods of storage, store at -20 °C.

## Images



### Western Blotting

**Image 1.** TMED4 antibody used at 1.25 µg/ml to detect target protein.



### Immunohistochemistry

**Image 2.** TMED4 antibody was used for immunohistochemistry at a concentration of 4-8 ug/ml to stain Epithelial cells of renal tubule (arrows) in Human Kidney. Magnification is at 400X