

Datasheet for ABIN630056 **anti-DDX41 antibody**



[Go to Product page](#)

1 Image

Overview

Quantity:	100 µg
Target:	DDX41
Reactivity:	Human, Mouse, Rat, Dog
Host:	Rabbit
Clonality:	Polyclonal
Conjugate:	This DDX41 antibody is un-conjugated
Application:	Western Blotting (WB)

Product Details

Immunogen:	DDX41 antibody was raised using a synthetic peptide corresponding to a region with amino acids AIHEYLLKGVAVAIHGGKDEERTKAIEAFREGKDVLVATDVASKGL
Purification:	Purified

Target Details

Target:	DDX41
Alternative Name:	DDX41 (DDX41 Products)
Background:	DEAD box proteins, characterized by the conserved motif Asp-Glu-Ala-Asp (DEAD), are putative RNA helicases. They are implicated in a number of cellular processes involving alteration of RNA secondary structure, such as translation initiation, nuclear and mitochondrial splicing, and ribosome and spliceosome assembly. Based on their distribution patterns, some members of the DEAD box protein family are believed to be involved in embryogenesis, spermatogenesis,

Target Details

and cellular growth and division. This gene encodes a member of this family. The function of this member has not been determined. Based on studies in *Drosophila*, the abstract gene is widely required during post-transcriptional gene expression.

Molecular Weight: 68 kDa (MW of target protein)

Application Details

Application Notes: WB: 1.25 µg/mL
Optimal conditions should be determined by the investigator.

Comment: DDX41 Blocking Peptide, catalog no. 33R-1267, is also available for use as a blocking control in assays to test for specificity of this DDX41 antibody

Restrictions: For Research Use only

Handling

Format: Lyophilized

Reconstitution: Lyophilized powder. Add distilled water for a 1 mg/mL concentration of DDX41 antibody in PBS

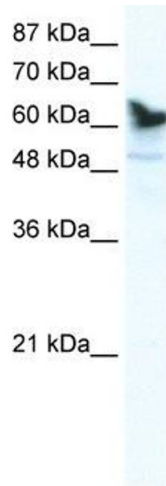
Concentration: Lot specific

Buffer: PBS

Handling Advice: Avoid repeated freeze/thaw cycles.

Storage: 4 °C/-20 °C

Storage Comment: Store at 2-8 °C for short periods. For longer periods of storage, store at -20 °C.



Western Blotting

Image 1. DDX41 antibody used at 1.25 ug/ml to detect target protein.