

Datasheet for ABIN630057
anti-CLCN3 antibody (C-Term)



[Go to Product page](#)

2 Images

Overview

Quantity:	100 µg
Target:	CLCN3
Binding Specificity:	C-Term
Reactivity:	Human
Host:	Rabbit
Clonality:	Polyclonal
Conjugate:	This CLCN3 antibody is un-conjugated
Application:	Western Blotting (WB), Immunohistochemistry (IHC)

Product Details

Immunogen:	CLCN3 antibody was raised using the C terminal of CLCN3 corresponding to a region with amino acids MESEQLFHRGYRNSYNSITSASSDEELLDGAGVIMDFQTSEDDNLLDGD
Specificity:	CLCN3 antibody was raised against the C terminal of CLCN3
Purification:	Purified

Target Details

Target:	CLCN3
Alternative Name:	CLCN3 (CLCN3 Products)
Background:	CLCN3 plays an important role in the cell proliferation of vascular smooth muscle cells. The PDZ-binding isoform of CLCN3 resides in the Golgi where it co-localizes with a small amount of CFTR (cystic fibrosis transmembrane conductance regulator).

Target Details

Molecular Weight: 95 kDa (MW of target protein)

Application Details

Application Notes: WB: 1.25 µg/mL, IHC: 4-8 µg/mL
Optimal conditions should be determined by the investigator.

Comment: CLCN3 Blocking Peptide, catalog no. 33R-5956, is also available for use as a blocking control in assays to test for specificity of this CLCN3 antibody

Restrictions: For Research Use only

Handling

Format: Lyophilized

Reconstitution: Lyophilized powder. Add distilled water for a 1 mg/mL concentration of CLCN3 antibody in PBS

Concentration: Lot specific

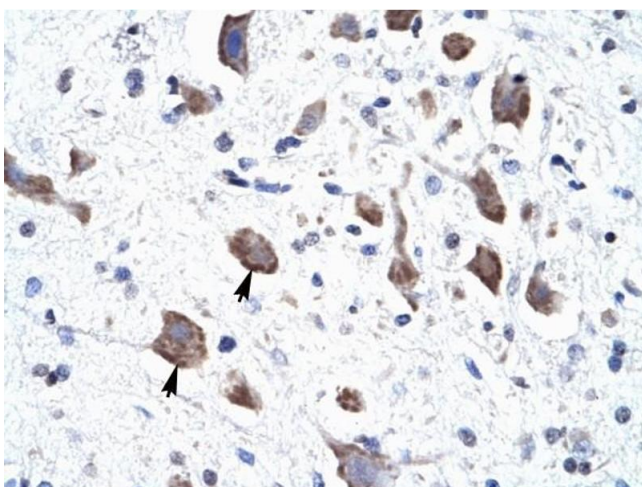
Buffer: PBS

Handling Advice: Avoid repeated freeze/thaw cycles.
Dilute only prior to immediate use.

Storage: 4 °C/-20 °C

Storage Comment: Store at 2-8 °C for short periods. For longer periods of storage, store at -20 °C.

Images



Immunohistochemistry

Image 1. CLCN3 antibody was used for immunohistochemistry at a concentration of 4-8 ug/ml to stain Neural cells (arrows) in Human Brain. Magnification is at 400X



Western Blotting

Image 2. CLCN3 antibody used at 1.25 ug/ml to detect target protein.