

Datasheet for ABIN630058
anti-KCNAB3 antibody (N-Term)



[Go to Product page](#)

2 Images

Overview

Quantity:	100 µg
Target:	KCNAB3
Binding Specificity:	N-Term
Reactivity:	Human, Dog
Host:	Rabbit
Clonality:	Polyclonal
Conjugate:	This KCNAB3 antibody is un-conjugated
Application:	Western Blotting (WB), Immunohistochemistry (IHC)

Product Details

Immunogen:	KCNAB3 antibody was raised using the N terminal of KCNAB3 corresponding to a region with amino acids RNLGKSGLRVSLGLGTWVTFGSQISDETAEDVLTVAYEHGVNLFDTAEV
Specificity:	KCNAB3 antibody was raised against the N terminal of KCNAB3
Purification:	Purified

Target Details

Target:	KCNAB3
Alternative Name:	KCNAB3 (KCNAB3 Products)
Background:	Voltage-gated potassium (Kv) channels represent the most complex class of voltage-gated ion channels from both functional and structural standpoints. Their diverse functions include regulating neurotransmitter release, heart rate, insulin secretion, neuronal excitability, epithelial

Target Details

electrolyte transport, smooth muscle contraction, and cell volume. Four sequence-related potassium channel genes - shaker, shaw, shab, and shal - have been identified in Drosophila, and each has been shown to have human homolog(s).

Molecular Weight: 44 kDa (MW of target protein)

Application Details

Application Notes: WB: 0.65 µg/mL, IHC: 4-8 µg/mL
Optimal conditions should be determined by the investigator.

Comment: KCNAB3 Blocking Peptide, catalog no. 33R-8079, is also available for use as a blocking control in assays to test for specificity of this KCNAB3 antibody

Restrictions: For Research Use only

Handling

Format: Lyophilized

Reconstitution: Lyophilized powder. Add distilled water for a 1 mg/mL concentration of KCNAB3 antibody in PBS

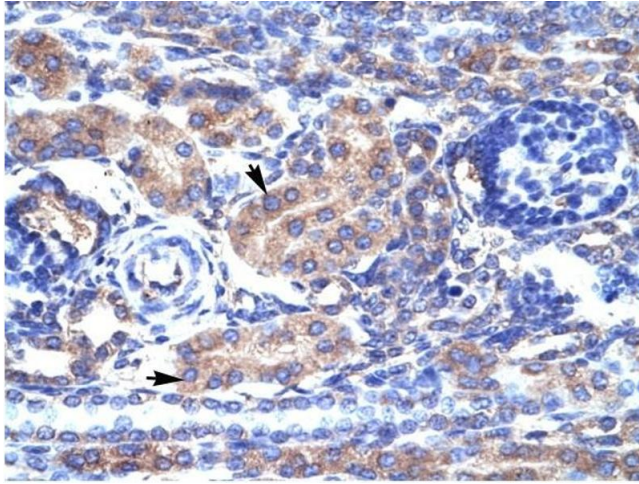
Concentration: Lot specific

Buffer: PBS

Handling Advice: Avoid repeated freeze/thaw cycles.
Dilute only prior to immediate use.

Storage: 4 °C/-20 °C

Storage Comment: Store at 2-8 °C for short periods. For longer periods of storage, store at -20 °C.



Immunohistochemistry

Image 1. KCNAB3 antibody was used for immunohistochemistry at a concentration of 4-8 ug/ml to stain Epithelial cells of renal tubule (arrows) in Human Kidney. Magnification is at 400X



Western Blotting

Image 2. KCNAB3 antibody used at 0.65 ug/ml to detect target protein.