

Datasheet for ABIN630059
anti-KCNAB2 antibody (Middle Region)



[Go to Product page](#)

2 Images

Overview

Quantity:	100 µg
Target:	KCNAB2
Binding Specificity:	Middle Region
Reactivity:	Rat, Human, Mouse, Dog, Zebrafish (Danio rerio)
Host:	Rabbit
Clonality:	Polyclonal
Conjugate:	This KCNAB2 antibody is un-conjugated
Application:	Western Blotting (WB), Immunohistochemistry (IHC)

Product Details

Immunogen:	KCNAB2 antibody was raised using the middle region of KCNAB2 corresponding to a region with amino acids WGGKAETERGLSRKHIIIEGLKASLERLQLEYVDVVFANRPDPNTPMEETV
Specificity:	KCNAB2 antibody was raised against the middle region of KCNAB2
Purification:	Purified

Target Details

Target:	KCNAB2
Alternative Name:	KCNAB2 (KCNAB2 Products)
Background:	This gene encodes a member of the potassium channel, voltage-gated, shaker-related subfamily. This member is one of the beta subunits, which are auxiliary proteins associating with functional Kv-alpha subunits. This member alters functional properties of the KCNA4 gene

Target Details

product. Voltage-gated potassium (Kv) channels represent the most complex class of voltage-gated ion channels from both functional and structural standpoints. Their diverse functions include regulating neurotransmitter release, heart rate, insulin secretion, neuronal excitability, epithelial electrolyte transport, smooth muscle contraction, and cell volume.

Molecular Weight: 40 kDa (MW of target protein)

Application Details

Application Notes: WB: 1.25 µg/mL, IHC: 4-8 µg/mL
Optimal conditions should be determined by the investigator.

Comment: KCNAB2 Blocking Peptide, catalog no. 33R-9950, is also available for use as a blocking control in assays to test for specificity of this KCNAB2 antibody

Restrictions: For Research Use only

Handling

Format: Lyophilized

Reconstitution: Lyophilized powder. Add distilled water for a 1 mg/mL concentration of KCNAB2 antibody in PBS

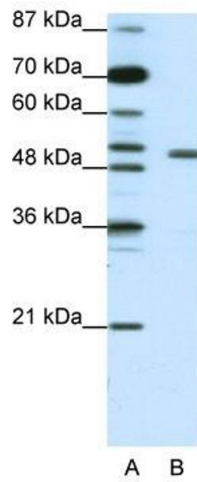
Concentration: Lot specific

Buffer: PBS

Handling Advice: Avoid repeated freeze/thaw cycles.
Dilute only prior to immediate use.

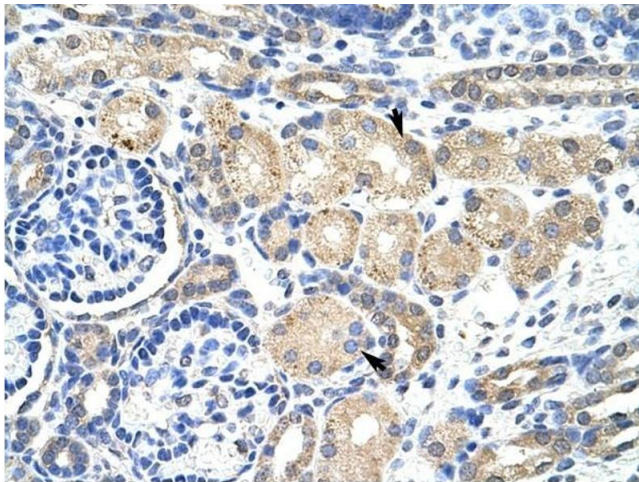
Storage: 4 °C/-20 °C

Storage Comment: Store at 2-8 °C for short periods. For longer periods of storage, store at -20 °C.



Western Blotting

Image 1. KCNAB2 antibody used at 1.25 ug/ml to detect target protein.



Immunohistochemistry

Image 2. KCNAB2 antibody was used for immunohistochemistry at a concentration of 4-8 ug/ml to stain Epithelial cells of renal tubule (arrows) in Human Kidney. Magnification is at 400X