

Datasheet for ABIN630060
anti-CLIC1 antibody (N-Term)



[Go to Product page](#)

2 Images

Overview

Quantity:	100 µg
Target:	CLIC1
Binding Specificity:	N-Term
Reactivity:	Human, Rat, Mouse, Dog
Host:	Rabbit
Clonality:	Polyclonal
Conjugate:	This CLIC1 antibody is un-conjugated
Application:	Western Blotting (WB), Immunohistochemistry (IHC)

Product Details

Immunogen:	CLIC1 antibody was raised using the N terminal of CLIC1 corresponding to a region with amino acids GQLPFLLYGTEVHTDTNKIEEFLEAVLCPPRYPKLAALNPESNTAGLDIF
Specificity:	CLIC1 antibody was raised against the N terminal of CLIC1
Purification:	Purified

Target Details

Target:	CLIC1
Alternative Name:	CLIC1 (CLIC1 Products)
Background:	Chloride intracellular channel 1 is a member of the p64 family, a diverse group of proteins that regulate fundamental cellular processes including stabilization of cell membrane potential, transepithelial transport, maintenance of intracellular pH, and regulation of cell volume. CLIC1

Target Details

Channel1 encodes a protein that localizes principally to the cell nucleus and exhibits both nuclear and plasma membrane chloride ion channel activity.

Molecular Weight: 27 kDa (MW of target protein)

Application Details

Application Notes: WB: 1.25 µg/mL, IHC: 4-8 µg/mL
Optimal conditions should be determined by the investigator.

Comment: CLIC1 Blocking Peptide, catalog no. 33R-3502, is also available for use as a blocking control in assays to test for specificity of this CLIC1 antibody

Restrictions: For Research Use only

Handling

Format: Lyophilized

Reconstitution: Lyophilized powder. Add distilled water for a 1 mg/mL concentration of CLIC1 antibody in PBS

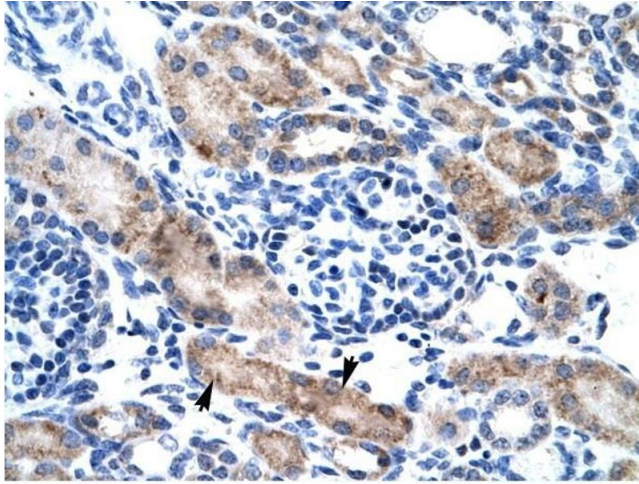
Concentration: Lot specific

Buffer: PBS

Handling Advice: Avoid repeated freeze/thaw cycles.
Dilute only prior to immediate use.

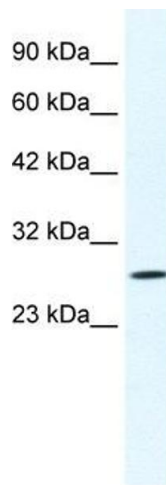
Storage: 4 °C/-20 °C

Storage Comment: Store at 2-8 °C for short periods. For longer periods of storage, store at -20 °C.



Immunohistochemistry

Image 1. CLIC1 antibody was used for immunohistochemistry at a concentration of 4-8 ug/ml to stain Epithelial cells of renal tubule (arrows) in Human Kidney. Magnification is at 400X



Western Blotting

Image 2. CLIC1 antibody used at 1.25 ug/ml to detect target protein.