

Datasheet for ABIN630061
anti-CATSPER2 antibody (N-Term)



[Go to Product page](#)

2 Images

Overview

Quantity:	100 µg
Target:	CATSPER2
Binding Specificity:	N-Term
Reactivity:	Human
Host:	Rabbit
Clonality:	Polyclonal
Conjugate:	This CATSPER2 antibody is un-conjugated
Application:	Western Blotting (WB), Immunohistochemistry (IHC)

Product Details

Immunogen:	CATSPER2 antibody was raised using the N terminal of CATSPER2 corresponding to a region with amino acids HLQGLSQAVPRHTIRELLDPSRQKKLVLGDQHQLVRFSIKPQRIEQISHA
Specificity:	CATSPER2 antibody was raised against the N terminal of CATSPER2
Purification:	Purified

Target Details

Target:	CATSPER2
Alternative Name:	CATSPER2 (CATSPER2 Products)
Background:	Calcium ions play a primary role in the regulation of sperm motility. Anti-CATSPER2 belongs to a family of putative cation channels that are specific to spermatozoa and localize to the flagellum. The protein family features a single repeat with six membrane-spanning segments

Target Details

and a predicted calcium-selective pore region. A second, closely linked copy of this gene has been identified. Although multiple transcript variants encoding protein isoforms have been characterized, they seem to be only transcribed from this gene. Additional splice variants have been described but their full-length nature has not been determined.

Molecular Weight: 46 kDa (MW of target protein)

Application Details

Application Notes: WB: 1.25 µg/mL, IHC: 4-8 µg/mL
Optimal conditions should be determined by the investigator.

Comment: CATSPER2 Blocking Peptide, catalog no. 33R-3784, is also available for use as a blocking control in assays to test for specificity of this CATSPER2 antibody

Restrictions: For Research Use only

Handling

Format: Lyophilized

Reconstitution: Lyophilized powder. Add distilled water for a 1 mg/mL concentration of CATSPER2 antibody in PBS

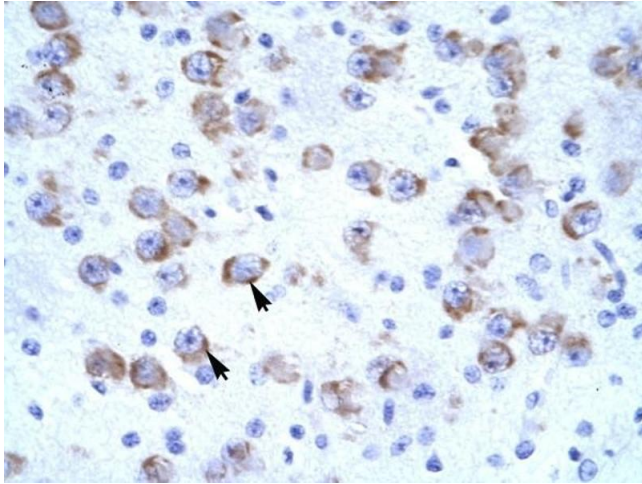
Concentration: Lot specific

Buffer: PBS

Handling Advice: Avoid repeated freeze/thaw cycles.
Dilute only prior to immediate use.

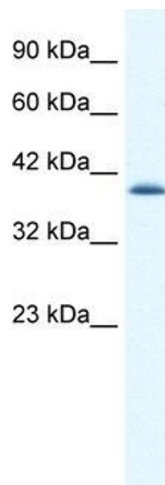
Storage: 4 °C/-20 °C

Storage Comment: Store at 2-8 °C for short periods. For longer periods of storage, store at -20 °C.



Immunohistochemistry

Image 1. CATSPER2 antibody was used for immunohistochemistry at a concentration of 4-8 ug/ml to stain Neural cells (arrows) in Human Brain. Magnification is at 400X



Western Blotting

Image 2. CATSPER2 antibody used at 1.25 ug/ml to detect target protein.