

Datasheet for ABIN630062  
**anti-CLIC1 antibody (C-Term)**



[Go to Product page](#)

1 Image

## Overview

|                      |                                      |
|----------------------|--------------------------------------|
| Quantity:            | 100 µg                               |
| Target:              | CLIC1                                |
| Binding Specificity: | C-Term                               |
| Reactivity:          | Human, Rat, Mouse                    |
| Host:                | Rabbit                               |
| Clonality:           | Polyclonal                           |
| Conjugate:           | This CLIC1 antibody is un-conjugated |
| Application:         | Western Blotting (WB)                |

## Product Details

|               |  |
|---------------|--|
| Immunogen:    | CLIC1 antibody was raised using the C terminal of CLIC1 corresponding to a region with amino acids LTLADCNLLPKLHIVQVVKKYRGFTIPEAFRGVHRYLSNAYAREEFAST |
| Specificity:  | CLIC1 antibody was raised against the C terminal of CLIC1  |
| Purification: | Purified   |

## Target Details

|                   |   |
|-------------------|---|
| Target:           | CLIC1   |
| Alternative Name: | CLIC1 ( <a href="#">CLIC1 Products</a> )  |
| Background:       | Chloride intracellular channel 1 is a member of the p64 family, a diverse group of proteins that regulate fundamental cellular processes including stabilization of cell membrane potential, transepithelial transport, maintenance of intracellular pH, and regulation of cell volume. CLIC1 |

## Target Details

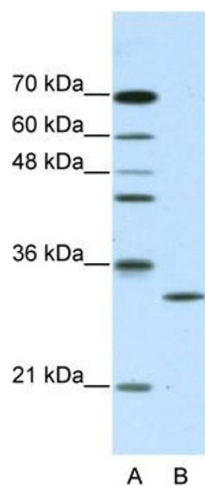
|                   |  |
|-------------------|--|
|                   | Channel1 encodes a protein that localizes principally to the cell nucleus and exhibits both nuclear and plasma membrane chloride ion channel activity. |
| Molecular Weight: | 27 kDa (MW of target protein)  |

## Application Details

|                    |  |
|--------------------|--|
| Application Notes: | WB: 2.5 µg/mL<br>Optimal conditions should be determined by the investigator.  |
| Comment:           | CLIC1 Blocking Peptide, catalog no. 33R-5478, is also available for use as a blocking control in assays to test for specificity of this CLIC1 antibody |
| Restrictions:      | For Research Use only  |

## Handling

|                  |  |
|------------------|--|
| Format:          | Lyophilized  |
| Reconstitution:  | Lyophilized powder. Add distilled water for a 1 mg/mL concentration of CLIC1 antibody in PBS |
| Concentration:   | Lot specific   |
| Buffer:          | PBS  |
| Handling Advice: | Avoid repeated freeze/thaw cycles.<br>Dilute only prior to immediate use.                    |
| Storage:         | 4 °C/-20 °C  |
| Storage Comment: | Store at 2-8 °C for short periods. For longer periods of storage, store at -20 °C.           |



Western Blotting

**Image 1.** CLIC1 antibody used at 2.5 ug/ml to detect target protein.