

Datasheet for ABIN630064
anti-KCTD11 antibody (N-Term)



[Go to Product page](#)

1 Image

Overview

Quantity:	100 µg
Target:	KCTD11
Binding Specificity:	N-Term
Reactivity:	Human
Host:	Rabbit
Clonality:	Polyclonal
Conjugate:	This KCTD11 antibody is un-conjugated
Application:	Western Blotting (WB)

Product Details

Immunogen:	KCTD11 antibody was raised using the N terminal of KCTD11 corresponding to a region with amino acids RLGRLDLPRGYGETALLRAEADFYQIRPLLDALRELEASQGTPAPTAALL
Specificity:	KCTD11 antibody was raised against the N terminal of KCTD11
Purification:	Purified

Target Details

Target:	KCTD11
Alternative Name:	KCTD11 (KCTD11 Products)
Background:	The KCTD11 gene encodes a protein that has been identified as a suppressor of Hedgehog signaling. Its inactivation might lead to a deregulation of the tumor-promoting Hedgehog pathway in medulloblastoma.

Target Details

Molecular Weight: 26 kDa (MW of target protein)

Pathways: [Hedgehog Signaling](#)

Application Details

Application Notes: WB: 1.25 µg/mL
Optimal conditions should be determined by the investigator.

Comment: KCTD11 Blocking Peptide, catalog no. 33R-8026, is also available for use as a blocking control in assays to test for specificity of this KCTD11 antibody

Restrictions: For Research Use only

Handling

Format: Lyophilized

Reconstitution: Lyophilized powder. Add distilled water for a 1 mg/mL concentration of KCTD11 antibody in PBS

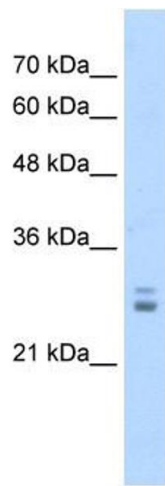
Concentration: Lot specific

Buffer: PBS

Handling Advice: Avoid repeated freeze/thaw cycles.
Dilute only prior to immediate use.

Storage: 4 °C/-20 °C

Storage Comment: Store at 2-8 °C for short periods. For longer periods of storage, store at -20 °C.



Western Blotting

Image 1. KCTD11 antibody used at 1.25 ug/ml to detect target protein.