

Datasheet for ABIN630073
anti-CATSPER2 antibody (C-Term)



[Go to Product page](#)

1 Image

Overview

Quantity:	100 µg
Target:	CATSPER2
Binding Specificity:	C-Term
Reactivity:	Human, Mouse
Host:	Rabbit
Clonality:	Polyclonal
Conjugate:	This CATSPER2 antibody is un-conjugated
Application:	Western Blotting (WB)

Product Details

Immunogen:	CATSPER2 antibody was raised using the C terminal of CATSPER2 corresponding to a region with amino acids LMEMDQDDRVPDRSLFRYFELLEKLQYNLEERKKLQEFVQALMNLEDK
Specificity:	CATSPER2 antibody was raised against the C terminal of CATSPER2
Purification:	Purified

Target Details

Target:	CATSPER2
Alternative Name:	CATSPER2 (CATSPER2 Products)
Background:	Calcium ions play a primary role in the regulation of sperm motility. This gene belongs to a family of putative cation channels that are specific to spermatozoa and localize to the flagellum. The protein family features a single repeat with six membrane-spanning segments

Target Details

and a predicted calcium-selective pore region. This gene is part of a tandem repeat on chromosome 15q14, the second copy of this gene is thought to be a pseudogene. Additional splice variants have been described but their full-length nature has not been determined.

Molecular Weight: 58 kDa (MW of target protein)

Application Details

Application Notes: WB: 1.25 µg/mL
Optimal conditions should be determined by the investigator.

Comment: CATSPER2 Blocking Peptide, catalog no. 33R-5202, is also available for use as a blocking control in assays to test for specificity of this CATSPER2 antibody

Restrictions: For Research Use only

Handling

Format: Lyophilized

Reconstitution: Lyophilized powder. Add distilled water for a 1 mg/mL concentration of CATSPER2 antibody in PBS

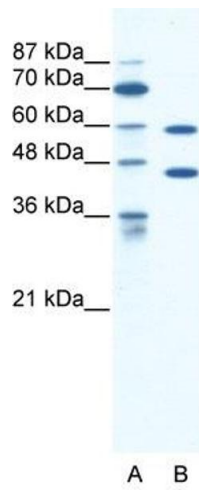
Concentration: Lot specific

Buffer: PBS

Handling Advice: Avoid repeated freeze/thaw cycles.
Dilute only prior to immediate use.

Storage: 4 °C/-20 °C

Storage Comment: Store at 2-8 °C for short periods. For longer periods of storage, store at -20 °C.



Western Blotting

Image 1. CATSPER2 antibody used at 1.25 ug/ml to detect target protein.