

Datasheet for ABIN630076
anti-KCTD10 antibody (N-Term)



[Go to Product page](#)

1 Image

Overview

Quantity:	100 µg
Target:	KCTD10
Binding Specificity:	N-Term
Reactivity:	Human, Dog
Host:	Rabbit
Clonality:	Polyclonal
Conjugate:	This KCTD10 antibody is un-conjugated
Application:	Western Blotting (WB)

Product Details

Immunogen:	KCTD10 antibody was raised using the N terminal of KCTD10 corresponding to a region with amino acids MEEMSGESVSSAVPAAATRRTTSFKGTSPSSKYVKLNVGGALYYTTMQTL
Specificity:	KCTD10 antibody was raised against the N terminal of KCTD10
Purification:	Purified

Target Details

Target:	KCTD10
Alternative Name:	KCTD10 (KCTD10 Products)
Background:	KCTD10, a rat potassium channel tetramerisation domain-containing 10 gene is a novel member of the polymerase delta-interacting protein 1 (PDIP1) gene family. KCTD10 shares significant similarity in amino acid sequence to PDIP1 and can interact with the small subunit of

Target Details

DNA polymerase delta and PCNA as PDIP1 does. Like PDIP1, the expression of KCTD10 gene can be induced by TNF-alpha in NIH3T3 cells.

Molecular Weight: 34 kDa (MW of target protein)

Application Details

Application Notes: WB: 1.25 µg/mL
Optimal conditions should be determined by the investigator.

Comment: KCTD10 Blocking Peptide, catalog no. 33R-5908, is also available for use as a blocking control in assays to test for specificity of this KCTD10 antibody

Restrictions: For Research Use only

Handling

Format: Lyophilized

Reconstitution: Lyophilized powder. Add distilled water for a 1 mg/mL concentration of KCTD10 antibody in PBS

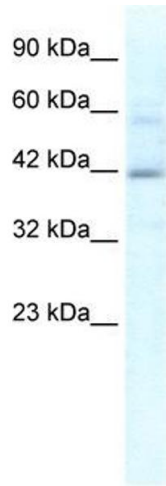
Concentration: Lot specific

Buffer: PBS

Handling Advice: Avoid repeated freeze/thaw cycles.
Dilute only prior to immediate use.

Storage: 4 °C/-20 °C

Storage Comment: Store at 2-8 °C for short periods. For longer periods of storage, store at -20 °C.



Western Blotting

Image 1. KCTD10 antibody used at 1.25 ug/ml to detect target protein.