

Datasheet for ABIN630078  
**anti-KCTD6 antibody (N-Term)**



[Go to Product page](#)

2 Images

## Overview

Quantity:	100 µg
Target:	KCTD6
Binding Specificity:	N-Term
Reactivity:	Human
Host:	Rabbit
Clonality:	Polyclonal
Conjugate:	This KCTD6 antibody is un-conjugated
Application:	Western Blotting (WB), Immunohistochemistry (IHC)

## Product Details

Immunogen:	KCTD6 antibody was raised using the N terminal of KCTD6 corresponding to a region with amino acids HLYTTSLTTLTRYPDMSMLGAMFGGDFPTTRDPQGNFYFINRDGPLFRYVLN
Specificity:	KCTD6 antibody was raised against the N terminal of KCTD6
Purification:	Purified

## Target Details

Target:	KCTD6
Alternative Name:	KCTD6 ( <a href="#">KCTD6 Products</a> )
Background:	KCTD6 is a domain of potassium channel.
Molecular Weight:	28 kDa (MW of target protein)

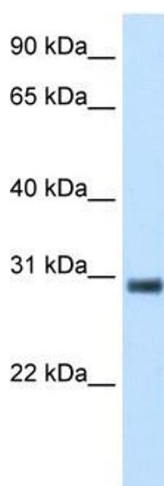
## Application Details

Application Notes:	WB: 5 µg/mL, IHC: 4-8 µg/mL Optimal conditions should be determined by the investigator.
Comment:	KCTD6 Blocking Peptide, catalog no. 33R-3794, is also available for use as a blocking control in assays to test for specificity of this KCTD6 antibody
Restrictions:	For Research Use only

## Handling

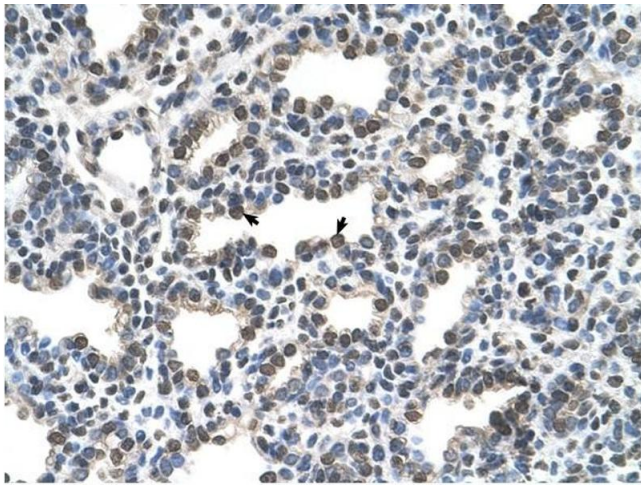
Format:	Lyophilized
Reconstitution:	Lyophilized powder. Add distilled water for a 1 mg/mL concentration of KCTD6 antibody in PBS
Concentration:	Lot specific
Buffer:	PBS
Handling Advice:	Avoid repeated freeze/thaw cycles. Dilute only prior to immediate use.
Storage:	4 °C/-20 °C
Storage Comment:	Store at 2-8 °C for short periods. For longer periods of storage, store at -20 °C.

## Images



### Western Blotting

**Image 1.** KCTD6 antibody used at 5 ug/ml to detect target protein.



### Immunohistochemistry

**Image 2.** KCTD6 antibody was used for immunohistochemistry at a concentration of 16.0 ug/ml to stain Alveolar cells (arrows) in Human Lung. Magnification is at 400X