

Datasheet for ABIN630080
anti-KCNRG antibody (N-Term)



[Go to Product page](#)

1 Image

Overview

Quantity:	100 µg
Target:	KCNRG
Binding Specificity:	N-Term
Reactivity:	Human
Host:	Rabbit
Clonality:	Polyclonal
Conjugate:	This KCNRG antibody is un-conjugated
Application:	Western Blotting (WB)

Product Details

Immunogen:	KCNRG antibody was raised using the N terminal of KCNRG corresponding to a region with amino acids VDRDGDLSFILDFLRTHQLLLPTEFSDYLRLQREALFYELRSLVDLLNP
Specificity:	KCNRG antibody was raised against the N terminal of KCNRG
Purification:	Purified

Target Details

Target:	KCNRG
Alternative Name:	KCNRG (KCNRG Products)
Background:	KCNRG is a soluble protein with characteristics suggesting it forms heterotetramers with voltage-gated K(+) channels and inhibits their function.

Target Details

Molecular Weight: 31 kDa (MW of target protein)

Application Details

Application Notes: WB: 2.5 µg/mL
Optimal conditions should be determined by the investigator.

Comment: KCNRG Blocking Peptide, catalog no. 33R-9475, is also available for use as a blocking control in assays to test for specificity of this KCNRG antibody

Restrictions: For Research Use only

Handling

Format: Lyophilized

Reconstitution: Lyophilized powder. Add distilled water for a 1 mg/mL concentration of KCNRG antibody in PBS

Concentration: Lot specific

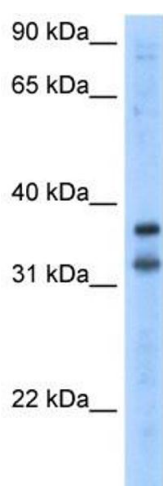
Buffer: PBS

Handling Advice: Avoid repeated freeze/thaw cycles.
Dilute only prior to immediate use.

Storage: 4 °C/-20 °C

Storage Comment: Store at 2-8 °C for short periods. For longer periods of storage, store at -20 °C.

Images



Western Blotting

Image 1. KCNRG antibody used at 2.5 ug/ml to detect target protein.