

Datasheet for ABIN630087

anti-P2RX7 antibody (N-Term)**2** Images[Go to Product page](#)

Overview

Quantity:	100 µg
Target:	P2RX7
Binding Specificity:	N-Term
Reactivity:	Human, Mouse
Host:	Rabbit
Clonality:	Polyclonal
Conjugate:	This P2RX7 antibody is un-conjugated
Application:	Western Blotting (WB), Immunohistochemistry (IHC)

Product Details

Immunogen:	P2 RX7 antibody was raised using the N terminal of P2 X7 corresponding to a region with amino acids IQSMNYGTIKWFFHVIIFSIVCFALVSDKLYQRKEPVISSVHTKVKGIAE
Specificity:	P2 RX7 antibody was raised against the N terminal of P2 X7
Purification:	Purified

Target Details

Target:	P2RX7
Alternative Name:	P2RX7 (P2RX7 Products)
Background:	The product P2RX7 belongs to the family of purinoceptors for ATP. This receptor functions as a ligand-gated ion channel and is responsible for ATP-dependent lysis of macrophages through the formation of membrane pores permeable to large molecules. Activation of this nuclear

Target Details

receptor by ATP in the cytoplasm may be a mechanism by which cellular activity can be coupled to changes in gene expression.

Molecular Weight: 31 kDa (MW of target protein)

Pathways: [Regulation of Leukocyte Mediated Immunity](#), [Positive Regulation of Immune Effector Process](#), [Synaptic Vesicle Exocytosis](#)

Application Details

Application Notes: WB: 1.25 µg/mL, IHC: 4-8 µg/mL
Optimal conditions should be determined by the investigator.

Comment: P2RX7 Blocking Peptide, catalog no. 33R-4125, is also available for use as a blocking control in assays to test for specificity of this P2RX7 antibody

Restrictions: For Research Use only

Handling

Format: Lyophilized

Reconstitution: Lyophilized powder. Add distilled water for a 1 mg/mL concentration of P0 X7 antibody in PBS

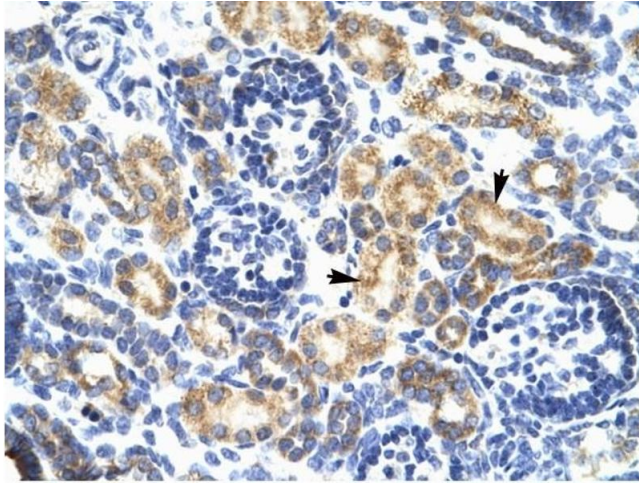
Concentration: Lot specific

Buffer: PBS

Handling Advice: Avoid repeated freeze/thaw cycles.
Dilute only prior to immediate use.

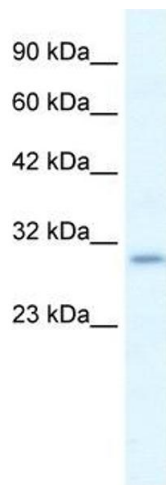
Storage: 4 °C/-20 °C

Storage Comment: Store at 2-8 °C for short periods. For longer periods of storage, store at -20 °C.



Immunohistochemistry

Image 1. P2RX7 antibody was used for immunohistochemistry at a concentration of 4-8 ug/ml to stain Epithelial cells of renal tubule (arrows) in Human Kidney. Magnification is at 400X



Western Blotting

Image 2. P2RX7 antibody used at 1.25 ug/ml to detect target protein.