

Datasheet for ABIN630088
anti-CLIC5 antibody (Middle Region)



[Go to Product page](#)

2 Images

Overview

Quantity:	100 µg
Target:	CLIC5
Binding Specificity:	Middle Region
Reactivity:	Human, Mouse
Host:	Rabbit
Clonality:	Polyclonal
Conjugate:	This CLIC5 antibody is un-conjugated
Application:	Western Blotting (WB), Immunohistochemistry (IHC)

Product Details

Immunogen:	CLIC5 antibody was raised using the middle region of CLIC5 corresponding to a region with amino acids HPPFLTFNGDVKTDVKNKIEEFLEETLTPEKYPKLAAKHRESNTAGIDIFS
Specificity:	CLIC5 antibody was raised against the middle region of CLIC5
Purification:	Purified

Target Details

Target:	CLIC5
Alternative Name:	CLIC5 (CLIC5 Products)
Background:	CLIC5 specifically associates with the cytoskeleton of placenta microvilli. CLIC5 Channel-5A has a role as a chloride channel in vitro and binds to cortical actin cytoskeleton.

Target Details

Molecular Weight: 46 kDa (MW of target protein)

Pathways: [Sensory Perception of Sound](#)

Application Details

Application Notes: WB: 1.25 µg/mL, IHC: 4-8 µg/mL
Optimal conditions should be determined by the investigator.

Comment: CLIC5 Blocking Peptide, catalog no. 33R-3815, is also available for use as a blocking control in assays to test for specificity of this CLIC5 antibody

Restrictions: For Research Use only

Handling

Format: Lyophilized

Reconstitution: Lyophilized powder. Add distilled water for a 1 mg/mL concentration of CLIC5 antibody in PBS

Concentration: Lot specific

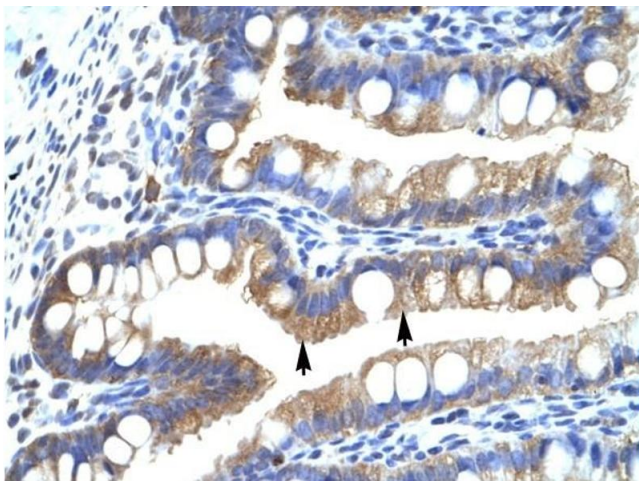
Buffer: PBS

Handling Advice: Avoid repeated freeze/thaw cycles.
Dilute only prior to immediate use.

Storage: 4 °C/-20 °C

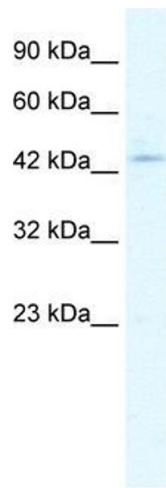
Storage Comment: Store at 2-8 °C for short periods. For longer periods of storage, store at -20 °C.

Images



Immunohistochemistry

Image 1. CLIC5 antibody was used for immunohistochemistry at a concentration of 4-8 µg/ml to stain Epithelial cells of intestinal villus (arrows) in Human Intestine. Magnification is at 400X



Western Blotting

Image 2. CLIC5 antibody used at 1.25 ug/ml to detect target protein.