

Datasheet for ABIN630104 **anti-GABRB2 antibody**



[Go to Product page](#)

1 Image

Overview

Quantity:	100 µg
Target:	GABRB2
Reactivity:	Human, Rat, Mouse, Dog
Host:	Rabbit
Clonality:	Polyclonal
Conjugate:	This GABRB2 antibody is un-conjugated
Application:	Western Blotting (WB)

Product Details

Immunogen:	GABRB2 antibody was raised using a synthetic peptide corresponding to a region with amino acids MWRVRKRGYFGIWSFPLIIAAVCAQSVNDPSNMSLVKETVDRLLKGYDIR
Purification:	Purified

Target Details

Target:	GABRB2
Alternative Name:	GABRB2 (GABRB2 Products)
Background:	The gamma-aminobutyric acid (GABA) A receptor is a multisubunit chloride channel that mediates the fastest inhibitory synaptic transmission in the central nervous system. This gene encodes GABA A receptor, beta 2 subunit. It is mapped to chromosome 5q34 in a cluster comprised of genes encoding alpha 1 and gamma 2 subunits of the GABA A receptor.
Molecular Weight:	59 kDa (MW of target protein)

Target Details

Pathways: [Sensory Perception of Sound](#), [Synaptic Membrane](#)

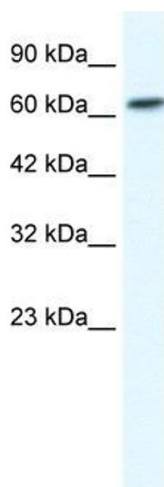
Application Details

Application Notes:	WB: 1.25 µg/mL Optimal conditions should be determined by the investigator.
Comment:	GABRB2 Blocking Peptide, catalog no. 33R-6621, is also available for use as a blocking control in assays to test for specificity of this GABRB2 antibody
Restrictions:	For Research Use only

Handling

Format:	Lyophilized
Reconstitution:	Lyophilized powder. Add distilled water for a 1 mg/mL concentration of GABRB2 antibody in PBS
Concentration:	Lot specific
Buffer:	PBS
Handling Advice:	Avoid repeated freeze/thaw cycles.
Storage:	4 °C/-20 °C
Storage Comment:	Store at 2-8 °C for short periods. For longer periods of storage, store at -20 °C.

Images



Western Blotting

Image 1. GABRB2 antibody used at 1.25 ug/ml to detect target protein.