

Datasheet for ABIN630105 **anti-KCNK10 antibody (C-Term)**



[Go to Product page](#)

1 Image

Overview

Quantity:	100 µg
Target:	KCNK10
Binding Specificity:	C-Term
Reactivity:	Human, Rat, Mouse, Dog
Host:	Rabbit
Clonality:	Polyclonal
Conjugate:	This KCNK10 antibody is un-conjugated
Application:	Western Blotting (WB)

Product Details

Immunogen:	KCNK10 antibody was raised using the C terminal of KCNK10 corresponding to a region with amino acids EDVQKIYKTFRNYSLDEEKKEEETKMCNSDNSSTAMLTDCIQQHAELN
Specificity:	KCNK10 antibody was raised against the C terminal of KCNK10
Purification:	Purified

Target Details

Target:	KCNK10
Alternative Name:	KCNK10 (KCNK10 Products)
Background:	KCNK10 is one of the members of the superfamily of potassium channel proteins containing two pore-forming P domains. The message for this gene is highly expressed in the kidney and pancreas. This channel is an open rectifier which primarily passes outward current under

Target Details

physiological K⁺ concentrations. The protein is stimulated strongly by arachidonic acid and to a lesser degree by membrane stretching, intracellular acidification, and general anaesthetics. Three transcript variants have been identified for this gene.

Molecular Weight: 59 kDa (MW of target protein)

Application Details

Application Notes: WB: 2.5 µg/mL
Optimal conditions should be determined by the investigator.

Comment: KCNK10 Blocking Peptide, catalog no. 33R-2331, is also available for use as a blocking control in assays to test for specificity of this KCNK10 antibody

Restrictions: For Research Use only

Handling

Format: Lyophilized

Reconstitution: Lyophilized powder. Add distilled water for a 1 mg/mL concentration of KCNK10 antibody in PBS

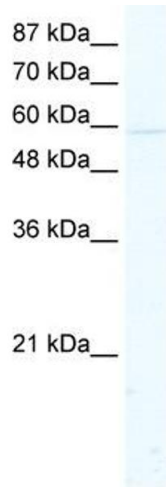
Concentration: Lot specific

Buffer: PBS

Handling Advice: Avoid repeated freeze/thaw cycles.
Dilute only prior to immediate use.

Storage: 4 °C/-20 °C

Storage Comment: Store at 2-8 °C for short periods. For longer periods of storage, store at -20 °C.



Western Blotting

Image 1. KCNK10 antibody used at 2.5 ug/ml to detect target protein.