

## Datasheet for ABIN630108 **anti-CACNG4 antibody (N-Term)**



[Go to Product page](#)

### 1 Image

#### Overview

Quantity:	100 µg
Target:	CACNG4
Binding Specificity:	N-Term
Reactivity:	Human, Rat, Mouse, Dog
Host:	Rabbit
Clonality:	Polyclonal
Conjugate:	This CACNG4 antibody is un-conjugated
Application:	Western Blotting (WB)

#### Product Details

Immunogen:	CACNG4 antibody was raised using the N terminal of CACNG4 corresponding to a region with amino acids GPPRRARGDLTHSGLWRVCCIEGIYKGHCFRINHFPEPNDDYDHSSEYL
Specificity:	CACNG4 antibody was raised against the N terminal of CACNG4
Purification:	Purified

#### Target Details

Target:	CACNG4
Alternative Name:	CACNG4 ( <a href="#">CACNG4 Products</a> )
Background:	L-type calcium channels are composed of five subunits. CACNG4 represents one of these subunits, gamma, and is one of several gamma subunit proteins. It is an integral membrane protein that is thought to stabilize the calcium channel in an inactive (closed) state. This gene is

## Target Details

---

a member of the neuronal calcium channel gamma subunit gene family of the PMP-22/EMP/MP20 family. L-type calcium channels are composed of five subunits.

Molecular Weight: 36 kDa (MW of target protein)

## Application Details

---

Application Notes: WB: 0.31 µg/mL  
Optimal conditions should be determined by the investigator.

Comment: CACNG4 Blocking Peptide, catalog no. 33R-3480, is also available for use as a blocking control in assays to test for specificity of this CACNG4 antibody

Restrictions: For Research Use only

## Handling

---

Format: Lyophilized

Reconstitution: Lyophilized powder. Add distilled water for a 1 mg/mL concentration of CACNG4 antibody in PBS

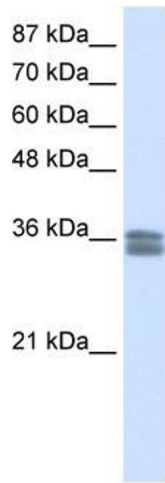
Concentration: Lot specific

Buffer: PBS

Handling Advice: Avoid repeated freeze/thaw cycles.  
Dilute only prior to immediate use.

Storage: 4 °C/-20 °C

Storage Comment: Store at 2-8 °C for short periods. For longer periods of storage, store at -20 °C.



### Western Blotting

**Image 1.** CACNG4 antibody used at 0.31 ug/ml to detect target protein.