

## Datasheet for ABIN630115 **anti-TRPM5 antibody (N-Term)**



[Go to Product page](#)

### 2 Images

#### Overview

Quantity:	100 µg
Target:	TRPM5
Binding Specificity:	N-Term
Reactivity:	Human
Host:	Rabbit
Clonality:	Polyclonal
Conjugate:	This TRPM5 antibody is un-conjugated
Application:	Western Blotting (WB), Immunohistochemistry (IHC)

#### Product Details

Immunogen:	TRPM5 antibody was raised using the N terminal of TRPM5 corresponding to a region with amino acids AAPWLILVGSGGIADVLAALVNQPHLLVPKVAEKQFKEKFPSKHFSWEDI
Specificity:	TRPM5 antibody was raised against the N terminal of TRPM5
Purification:	Purified

#### Target Details

Target:	TRPM5
Alternative Name:	TRPM5 ( <a href="#">TRPM5 Products</a> )
Background:	TRPM5 is a voltage-modulated Ca(2+)-activated, monovalent cation channel (VCAM) that mediates a transient membrane depolarization and plays a central role in taste transduction. It is activated by arachidonic acid in vitro. It may be involved in perception of bitter, sweet and

## Target Details

umami tastes. It may also be involved in sensing semiochemicals.

Molecular Weight: 131 kDa (MW of target protein)

## Application Details

Application Notes: WB: 1.25 µg/mL, IHC: 4-8 µg/mL  
Optimal conditions should be determined by the investigator.

Comment: TRPM5 Blocking Peptide, catalog no. 33R-1043, is also available for use as a blocking control in assays to test for specificity of this TRPM5 antibody

Restrictions: For Research Use only

## Handling

Format: Lyophilized

Reconstitution: Lyophilized powder. Add distilled water for a 1 mg/mL concentration of TRPM5 antibody in PBS

Concentration: Lot specific

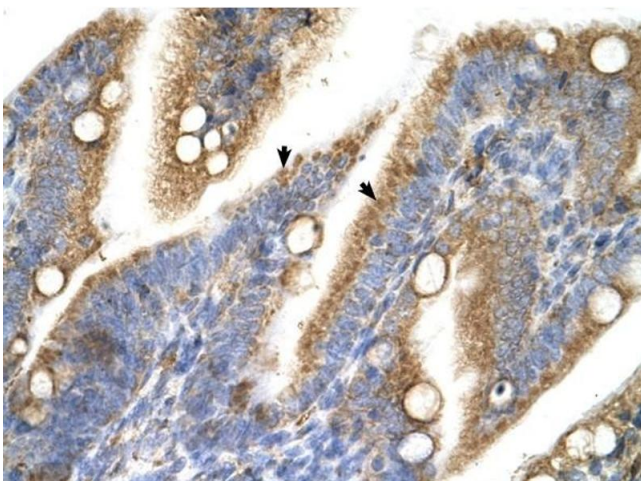
Buffer: PBS

Handling Advice: Avoid repeated freeze/thaw cycles.  
Dilute only prior to immediate use.

Storage: 4 °C/-20 °C

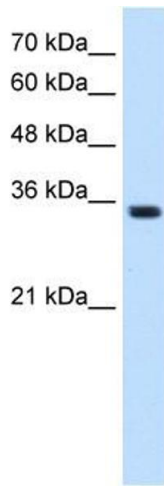
Storage Comment: Store at 2-8 °C for short periods. For longer periods of storage, store at -20 °C.

## Images



### Immunohistochemistry

**Image 1.** TRPM5 antibody was used for immunohistochemistry at a concentration of 4-8 µg/ml to stain Epithelial cells of intestinal villus (arrows) in Human Intestine. Magnification is at 400X



### Western Blotting

**Image 2.** TRPM5 antibody used at 1.25 ug/ml to detect target protein.