

Datasheet for ABIN630118 **anti-GABRG2 antibody**



[Go to Product page](#)

1 Image

Overview

Quantity:	100 µg
Target:	GABRG2
Reactivity:	Human, Mouse, Rat, Dog
Host:	Rabbit
Clonality:	Polyclonal
Conjugate:	This GABRG2 antibody is un-conjugated
Application:	Western Blotting (WB)

Product Details

Immunogen:	GABRG2 antibody was raised using a synthetic peptide corresponding to a region with amino acids AMDLFVSVCFIFVFSALVEYGLHYFVSNRKPSKDKDKKKKKNPAPTIDIR
Purification:	Purified

Target Details

Target:	GABRG2
Alternative Name:	GABRG2 (GABRG2 Products)
Background:	Gamma-aminobutyric acid (GABA), the major inhibitory neurotransmitter in the brain, mediates neuronal inhibition by binding to GABA receptors. The type A GABA receptors are pentameric chloride channels assembled from among many genetic variants of GABA(A) subunits. GABRG2 is the gamma 2 subunit of GABA(A) receptor. Mutations in this gene have been associated with epilepsy and febrile seizures.

Target Details

Molecular Weight: 36 kDa (MW of target protein)

Application Details

Application Notes: WB: 1.25 µg/mL
Optimal conditions should be determined by the investigator.

Comment: GABRG2 Blocking Peptide, catalog no. 33R-1384, is also available for use as a blocking control in assays to test for specificity of this GABRG2 antibody

Restrictions: For Research Use only

Handling

Format: Lyophilized

Reconstitution: Lyophilized powder. Add distilled water for a 1 mg/mL concentration of GABRG2 antibody in PBS

Concentration: Lot specific

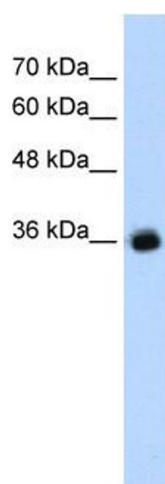
Buffer: PBS

Handling Advice: Avoid repeated freeze/thaw cycles.

Storage: 4 °C/-20 °C

Storage Comment: Store at 2-8 °C for short periods. For longer periods of storage, store at -20 °C.

Images



Western Blotting

Image 1. GABRG2 antibody used at 1.25 ug/ml to detect target protein.