

Datasheet for ABIN630119 **anti-P2RX1 antibody (Middle Region)**



[Go to Product page](#)

2 Images

Overview

Quantity:	100 µg
Target:	P2RX1
Binding Specificity:	Middle Region
Reactivity:	Human, Dog
Host:	Rabbit
Clonality:	Polyclonal
Conjugate:	This P2RX1 antibody is un-conjugated
Application:	Western Blotting (WB), Immunohistochemistry (IHC)

Product Details

Immunogen:	P2 RX1 antibody was raised using the middle region of P2 X1 corresponding to a region with amino acids VVGITIDWHCDLDWHVRHCRPIYEFHGLYEKLNLSPGFNFRFARHFVENG
Specificity:	P2 RX1 antibody was raised against the middle region of P2 X1
Purification:	Purified

Target Details

Target:	P2RX1
Alternative Name:	P2RX1 (P2RX1 Products)
Background:	P2RX1 belongs to the family of purinoceptors for ATP. This receptor functions as a ligand-gated ion channel with relatively high calcium permeability. Binding to ATP mediates synaptic transmission between neurons and from neurons to smooth muscle, being responsible, for

Target Details

example, for sympathetic vasoconstriction in small arteries, arterioles and vas deferens. Mouse studies suggest that this receptor is essential for normal male reproductive function. It is possible that the development of selective antagonists for this receptor may provide an effective non-hormonal male contraceptive pill.

Molecular Weight: 45 kDa (MW of target protein)

Pathways: [Positive Regulation of Endopeptidase Activity](#)

Application Details

Application Notes: WB: 2.5 µg/mL, IHC: 4-8 µg/mL
Optimal conditions should be determined by the investigator.

Comment: P2RX1 Blocking Peptide, catalog no. 33R-9880, is also available for use as a blocking control in assays to test for specificity of this P2RX1 antibody

Restrictions: For Research Use only

Handling

Format: Lyophilized

Reconstitution: Lyophilized powder. Add distilled water for a 1 mg/mL concentration of P0 X1 antibody in PBS

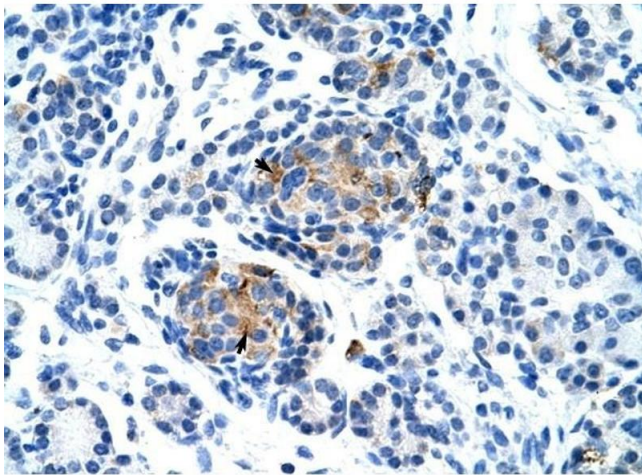
Concentration: Lot specific

Buffer: PBS

Handling Advice: Avoid repeated freeze/thaw cycles.
Dilute only prior to immediate use.

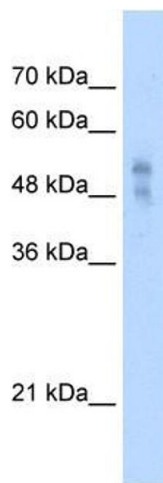
Storage: 4 °C/-20 °C

Storage Comment: Store at 2-8 °C for short periods. For longer periods of storage, store at -20 °C.



Immunohistochemistry

Image 1. P2RX1 antibody was used for immunohistochemistry at a concentration of 4-8 ug/ml to stain Epithelial cells of pancreatic acinus (arrows) in Human Pancreas. Magnification is at 400X



Western Blotting

Image 2. P2RX1 antibody used at 2.5 ug/ml to detect target protein.