

Datasheet for ABIN630124
anti-MBNL1 antibody



[Go to Product page](#)

1 Image

Overview

Quantity:	100 µg
Target:	MBNL1
Reactivity:	Human, Dog
Host:	Rabbit
Clonality:	Polyclonal
Conjugate:	This MBNL1 antibody is un-conjugated
Application:	Western Blotting (WB)

Product Details

Immunogen:	MBNL1 antibody was raised using a synthetic peptide corresponding to a region with amino acids LCPQQQHLPQVFPSLQQPQPTSPILDASTLLGATSCPAAAAGKMIPPIISA
Purification:	Purified

Target Details

Target:	MBNL1
Alternative Name:	MBNL1 (MBNL1 Products)
Background:	MBNL1 contains 4 C3H1-type zinc fingers and binds to CUG triplet repeat expansion dsRNA.
Molecular Weight:	37 kDa (MW of target protein)
Pathways:	Ribonucleoprotein Complex Subunit Organization

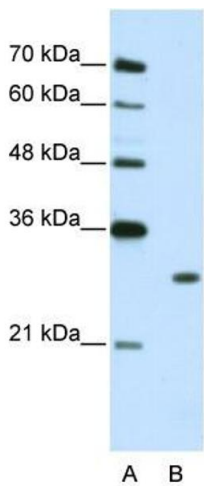
Application Details

Application Notes:	WB: 2.5 µg/mL Optimal conditions should be determined by the investigator.
Comment:	MBNL1 Blocking Peptide, catalog no. 33R-4829, is also available for use as a blocking control in assays to test for specificity of this MBNL1 antibody
Restrictions:	For Research Use only

Handling

Format:	Lyophilized
Reconstitution:	Lyophilized powder. Add distilled water for a 1 mg/mL concentration of MBNL1 antibody in PBS
Concentration:	Lot specific
Buffer:	PBS
Handling Advice:	Avoid repeated freeze/thaw cycles.
Storage:	4 °C/-20 °C
Storage Comment:	Store at 2-8 °C for short periods. For longer periods of storage, store at -20 °C.

Images



Western Blotting

Image 1. MBNL1 antibody used at 2.5 µg/ml to detect target protein.