

Datasheet for ABIN630127
anti-DNASE2B antibody (C-Term)



[Go to Product page](#)

1 Image

Overview

Quantity:	100 µg
Target:	DNASE2B
Binding Specificity:	C-Term
Reactivity:	Human
Host:	Rabbit
Clonality:	Polyclonal
Conjugate:	This DNASE2B antibody is un-conjugated
Application:	Western Blotting (WB)

Product Details

Immunogen:	DNASE2 B antibody was raised using the C terminal of DNASE2 corresponding to a region with amino acids MAQRLKTHLLTETWQRKRQELPSNCSLPYHVYNIKAIKLSRHSYFSSYQD
Specificity:	DNASE2 B antibody was raised against the C terminal of DNASE2
Purification:	Purified

Target Details

Target:	DNASE2B
Alternative Name:	DNASE2B (DNASE2B Products)
Background:	DNASE2B shares considerable sequence similarity to, and is structurally related to DNase II. The latter is a well characterized endonuclease that catalyzes DNA hydrolysis in the absence of divalent cations at acidic pH. Unlike DNase II which is ubiquitously expressed, expression of this

Target Details

protein is restricted to the salivary gland and lungs.

Molecular Weight: 17 kDa (MW of target protein)

Application Details

Application Notes: WB: 1.25 µg/mL
Optimal conditions should be determined by the investigator.

Comment: DNASE2B Blocking Peptide, catalog no. 33R-5727, is also available for use as a blocking control in assays to test for specificity of this DNASE2B antibody

Restrictions: For Research Use only

Handling

Format: Lyophilized

Reconstitution: Lyophilized powder. Add distilled water for a 1 mg/mL concentration of DNASE0 antibody in PBS

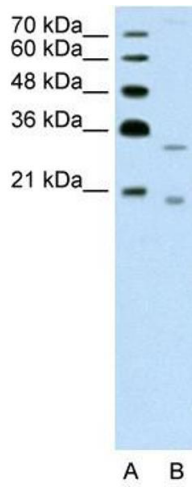
Concentration: Lot specific

Buffer: PBS

Handling Advice: Avoid repeated freeze/thaw cycles.
Dilute only prior to immediate use.

Storage: 4 °C/-20 °C

Storage Comment: Store at 2-8 °C for short periods. For longer periods of storage, store at -20 °C.



Western Blotting

Image 1. DNASE2B antibody used at 1.25 ug/ml to detect target protein.