

Datasheet for ABIN630134

anti-GOT2 antibody[Go to Product page](#)**1** Image

Overview

Quantity:	100 µg
Target:	GOT2
Reactivity:	Human, Mouse, Rat, Zebrafish (Danio rerio), Dog
Host:	Rabbit
Clonality:	Polyclonal
Conjugate:	This GOT2 antibody is un-conjugated
Application:	Western Blotting (WB)

Product Details

Immunogen:	GOT2 antibody was raised using a synthetic peptide corresponding to a region with amino acids PPDPIILGVTEAFKRDTNSKKMNLGVGAYRDDNGKPYVLPSVRKAEAQIAA
Purification:	Purified

Target Details

Target:	GOT2
Alternative Name:	GOT2 (GOT2 Products)
Background:	Glutamic-oxaloacetic transaminase is a pyridoxal phosphate-dependent enzyme which exists in cytoplasmic and inner-membrane mitochondrial forms, GOT1 and GOT2, respectively. GOT plays a role in amino acid metabolism and the urea and tricarboxylic acid cycles. The two enzymes are homodimeric and show close homology.
Molecular Weight:	45 kDa (MW of target protein)

Target Details

Pathways: [Monocarboxylic Acid Catabolic Process](#)

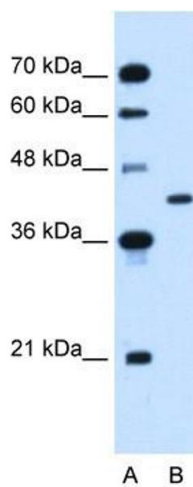
Application Details

Application Notes:	WB: 2.5 µg/mL Optimal conditions should be determined by the investigator.
Comment:	GOT2 Blocking Peptide, catalog no. 33R-7247, is also available for use as a blocking control in assays to test for specificity of this GOT2 antibody
Restrictions:	For Research Use only

Handling

Format:	Lyophilized
Reconstitution:	Lyophilized powder. Add distilled water for a 1 mg/mL concentration of GOT2 antibody in PBS
Concentration:	Lot specific
Buffer:	PBS
Handling Advice:	Avoid repeated freeze/thaw cycles.
Storage:	4 °C/-20 °C
Storage Comment:	Store at 2-8 °C for short periods. For longer periods of storage, store at -20 °C.

Images



Western Blotting

Image 1. GOT2 antibody used at 2.5 ug/ml to detect target protein.