

Datasheet for ABIN630136 **anti-WNT5B antibody (C-Term)**



[Go to Product page](#)

1 Image

Overview

Quantity:	100 µg
Target:	WNT5B
Binding Specificity:	C-Term
Reactivity:	Human
Host:	Rabbit
Clonality:	Polyclonal
Conjugate:	This WNT5B antibody is un-conjugated
Application:	Western Blotting (WB)

Product Details

Immunogen:	WNT5 B antibody was raised using the C terminal of WNT5 corresponding to a region with amino acids GRLCNKTSEGMDGCELMCCGRGYNQFKSVQVERCHCKFWCCFVRCKKCT
Specificity:	WNT5 B antibody was raised against the C terminal of WNT5
Purification:	Purified

Target Details

Target:	WNT5B
Alternative Name:	WNT5B (WNT5B Products)
Background:	The WNT gene family consists of structurally related genes which encode secreted signaling proteins. These proteins have been implicated in oncogenesis and in several developmental processes, including regulation of cell fate and patterning during embryogenesis. WNT5B gene

Target Details

is a member of the WNT gene family. WNT5B shows 94% and 80% amino acid identity to the mouse Wnt5b protein and the human WNT5A protein.

Molecular Weight: 39 kDa (MW of target protein)

Pathways: [WNT Signaling](#), [Embryonic Body Morphogenesis](#), [Positive Regulation of fat Cell Differentiation](#)

Application Details

Application Notes: WB: 1.25 µg/mL
Optimal conditions should be determined by the investigator.

Comment: WNT5B Blocking Peptide, catalog no. 33R-3537, is also available for use as a blocking control in assays to test for specificity of this WNT5B antibody

Restrictions: For Research Use only

Handling

Format: Lyophilized

Reconstitution: Lyophilized powder. Add distilled water for a 1 mg/mL concentration of WNT0 antibody in PBS

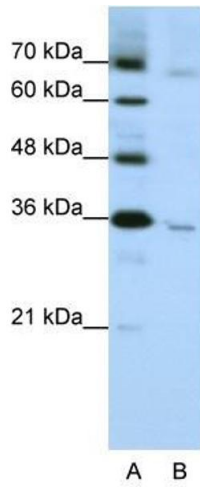
Concentration: Lot specific

Buffer: PBS

Handling Advice: Avoid repeated freeze/thaw cycles.
Dilute only prior to immediate use.

Storage: 4 °C/-20 °C

Storage Comment: Store at 2-8 °C for short periods. For longer periods of storage, store at -20 °C.



Western Blotting

Image 1. WNT5B antibody used at 1.25 ug/ml to detect target protein.