

Datasheet for ABIN630142  
**anti-SDF2 antibody (N-Term)**



[Go to Product page](#)

3 Images

### Overview

Quantity:	100 µg
Target:	SDF2
Binding Specificity:	N-Term
Reactivity:	Human, Mouse, Rat
Host:	Rabbit
Clonality:	Polyclonal
Conjugate:	This SDF2 antibody is un-conjugated
Application:	Western Blotting (WB), Immunohistochemistry (IHC)

### Product Details

Immunogen:	SDF2 antibody was raised using the N terminal of SDF2 corresponding to a region with amino acids KLLNTRHNVRLHSHDVRYGSGSQSVTGVTSDDSNSYWRIRGKSATVC
Specificity:	SDF2 antibody was raised against the N terminal of SDF2
Purification:	Purified

### Target Details

Target:	SDF2
Alternative Name:	SDF2 ( <a href="#">SDF2 Products</a> )
Background:	SDF2 is believed to be a secretory protein. It has regions of similarity to hydrophilic segments of yeast mannosyltransferases. Its expression is ubiquitous and the gene appears to be relatively conserved among mammals.

## Target Details

Molecular Weight:	21 kDa (MW of target protein)
Pathways:	<a href="#">SARS-CoV-2 Protein Interactome</a>

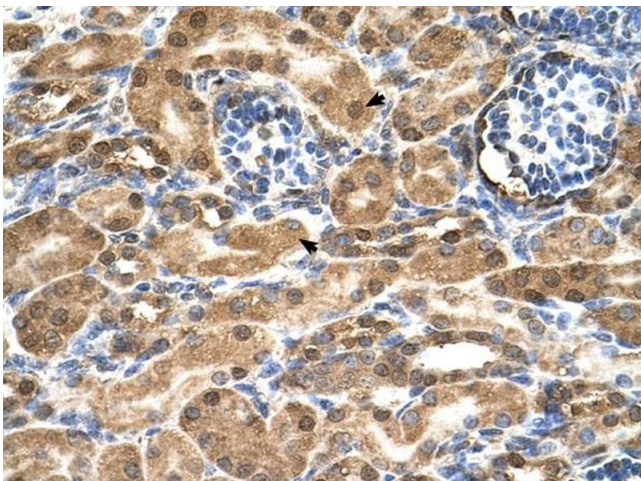
## Application Details

Application Notes:	WB: 1.25 µg/mL, IHC: 4-8 µg/mL Optimal conditions should be determined by the investigator.
Comment:	SDF2 Blocking Peptide, catalog no. 33R-4518, is also available for use as a blocking control in assays to test for specificity of this SDF2 antibody
Restrictions:	For Research Use only

## Handling

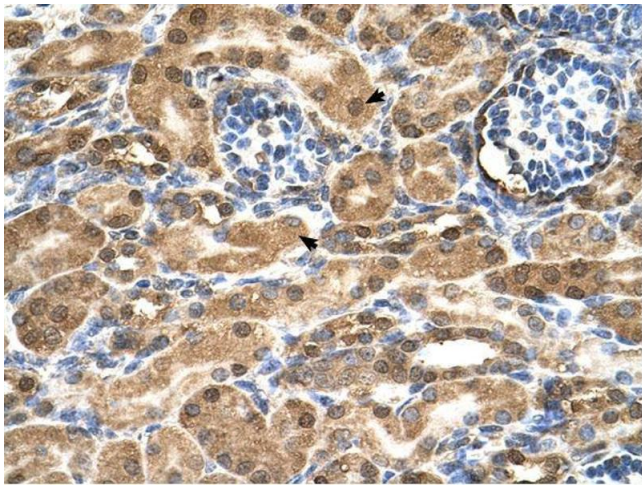
Format:	Lyophilized
Reconstitution:	Lyophilized powder. Add distilled water for a 1 mg/mL concentration of SDF2 antibody in PBS
Concentration:	Lot specific
Buffer:	PBS
Handling Advice:	Avoid repeated freeze/thaw cycles. Dilute only prior to immediate use.
Storage:	4 °C/-20 °C
Storage Comment:	Store at 2-8 °C for short periods. For longer periods of storage, store at -20 °C.

## Images



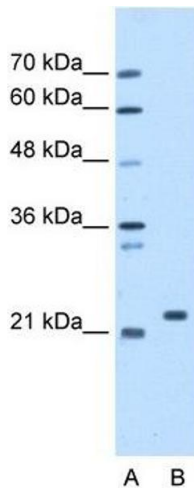
### Immunohistochemistry

**Image 1.** SDF2 antibody was used for immunohistochemistry at a concentration of 4-8 µg/ml to stain Epithelial cells of renal tubule (arrows) in Human Kidney. Magnification is at 400X



### Immunohistochemistry

**Image 2.** SDF2 antibody was used for immunohistochemistry at a concentration of 4-8 ug/ml. Magnification is at 400X



### Western Blotting

**Image 3.** SDF2 antibody used at 1.25 ug/ml to detect target protein.