

## Datasheet for ABIN630146 **anti-WNT9B antibody (C-Term)**



[Go to Product page](#)

### 2 Images

#### Overview

Quantity:	100 µg
Target:	WNT9B
Binding Specificity:	C-Term
Reactivity:	Human
Host:	Rabbit
Clonality:	Polyclonal
Conjugate:	This WNT9B antibody is un-conjugated
Application:	Western Blotting (WB), Immunohistochemistry (IHC)

#### Product Details

Immunogen:	WNT9 B antibody was raised using the C terminal of WNT9 corresponding to a region with amino acids FRETGQVLKLRYSKSAVKVSSATNEALGRLELWAPARQGLTKGLAPRSGD
Specificity:	WNT9 B antibody was raised against the C terminal of WNT9
Purification:	Purified

#### Target Details

Target:	WNT9B
Alternative Name:	WNT9B ( <a href="#">WNT9B Products</a> )
Background:	WNT9B is a member of the WNT family. They are secreted signaling proteins. These proteins have been implicated in oncogenesis and in several developmental processes, including regulation of cell fate and patterning during embryogenesis.

## Target Details

Molecular Weight: 39 kDa (MW of target protein)

Pathways: [WNT Signaling, Tube Formation](#)

## Application Details

Application Notes: WB: 5 µg/mL, IHC: 4-8 µg/mL  
Optimal conditions should be determined by the investigator.

Comment: WNT9B Blocking Peptide, catalog no. 33R-3045, is also available for use as a blocking control in assays to test for specificity of this WNT9B antibody

Restrictions: For Research Use only

## Handling

Format: Lyophilized

Reconstitution: Lyophilized powder. Add distilled water for a 1 mg/mL concentration of WNT9B antibody in PBS

Concentration: Lot specific

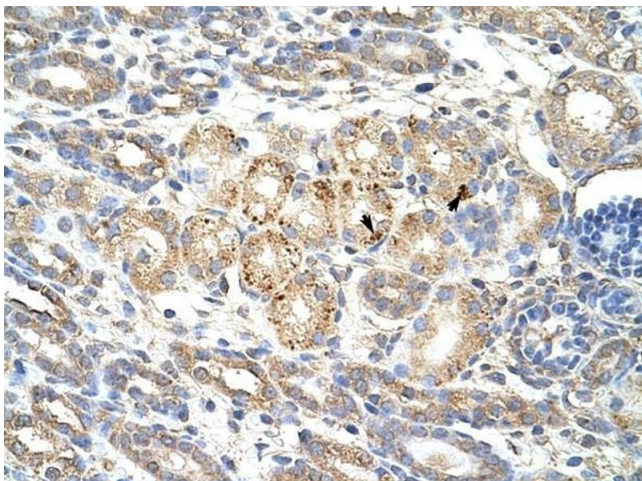
Buffer: PBS

Handling Advice: Avoid repeated freeze/thaw cycles.  
Dilute only prior to immediate use.

Storage: 4 °C/-20 °C

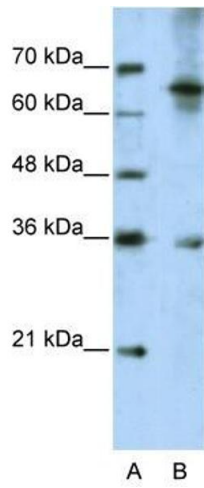
Storage Comment: Store at 2-8 °C for short periods. For longer periods of storage, store at -20 °C.

## Images



### Immunohistochemistry

**Image 1.** WNT9B antibody was used for immunohistochemistry at a concentration of 4-8 µg/ml to stain Epithelial cells of renal tubule (arrows) in Human Kidney. Magnification is at 400X



### Western Blotting

**Image 2.** WNT9B antibody used at 5 ug/ml to detect target protein.