

Datasheet for ABIN630151  
**anti-EGFL8 antibody (C-Term)**



[Go to Product page](#)

2 Images

## Overview

Quantity:	100 µg
Target:	EGFL8
Binding Specificity:	C-Term
Reactivity:	Human, Mouse, Rat
Host:	Rabbit
Clonality:	Polyclonal
Conjugate:	This EGFL8 antibody is un-conjugated
Application:	Immunohistochemistry (IHC), Western Blotting (WB)

## Product Details

Immunogen:	EGFL8 antibody was raised using the C terminal of EGFL8 corresponding to a region with amino acids QAGAWRAVLVPPEELQPEQVAELWGRGDRIESLSDQVLLLEERLGACS
Specificity:	EGFL8 antibody was raised against the C terminal of EGFL8
Purification:	Purified

## Target Details

Target:	EGFL8
Alternative Name:	EGFL8 ( <a href="#">EGFL8 Products</a> )
Background:	The function of EGF protein is not widely studied, and is yet to be elucidated fully.
Molecular Weight:	32 kDa (MW of target protein)

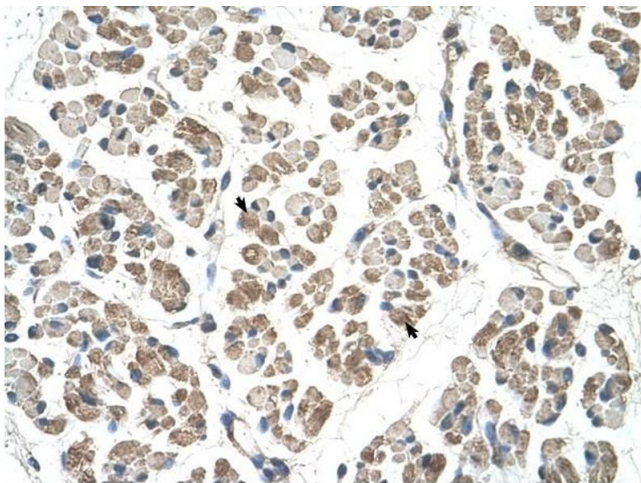
## Application Details

Application Notes:	WB: 1.25 µg/mL, IHC: 4-8 µg/mL Optimal conditions should be determined by the investigator.
Comment:	EGFL8 Blocking Peptide, catalog no. 33R-7460, is also available for use as a blocking control in assays to test for specificity of this EGFL8 antibody
Restrictions:	For Research Use only

## Handling

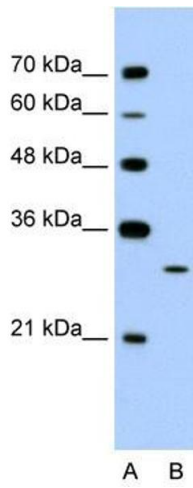
Format:	Lyophilized
Reconstitution:	Lyophilized powder. Add distilled water for a 1 mg/mL concentration of EGFL8 antibody in PBS
Concentration:	Lot specific
Buffer:	PBS
Handling Advice:	Avoid repeated freeze/thaw cycles. Dilute only prior to immediate use.
Storage:	4 °C/-20 °C
Storage Comment:	Store at 2-8 °C for short periods. For longer periods of storage, store at -20 °C.

## Images



### Immunohistochemistry

**Image 1.** EGFL8 antibody was used for immunohistochemistry at a concentration of 4-8 µg/ml to stain skeletal muscle cells (arrows) in human muscle. Magnification is at 400X



### Western Blotting

**Image 2.** EGFL8 antibody used at 1.25 ug/ml to detect target protein.