

Datasheet for ABIN630153
anti-Olfactomedin 4 antibody (C-Term)



[Go to Product page](#)

1 Image

Overview

| | |
|----------------------|---|
| Quantity: | 100 µg |
| Target: | Olfactomedin 4 (OLFM4) |
| Binding Specificity: | C-Term |
| Reactivity: | Human |
| Host: | Rabbit |
| Clonality: | Polyclonal |
| Conjugate: | This Olfactomedin 4 antibody is un-conjugated |
| Application: | Western Blotting (WB) |

Product Details

| | |
|---------------|---|
| Immunogen: | OLFM4 antibody was raised using the C terminal of OLFM4 corresponding to a region with amino acids EEIFYYYDTNTGKEGKLDIVMHKMQEKVQSINYNPFDQKLYVYNDGYLLN |
| Specificity: | OLFM4 antibody was raised against the C terminal of OLFM4 |
| Purification: | Purified |

Target Details

| | |
|-------------------|---|
| Target: | Olfactomedin 4 (OLFM4) |
| Alternative Name: | OLFM4 (OLFM4 Products) |
| Background: | OLFM4 is a member of the olfactomedin-related protein family. The exact function of its gene has not yet been determined. |

Target Details

Molecular Weight: 55 kDa (MW of target protein)

Application Details

Application Notes: WB: 5 µg/mL

Optimal conditions should be determined by the investigator.

Comment: OLFM4 Blocking Peptide, catalog no. 33R-2362, is also available for use as a blocking control in assays to test for specificity of this OLFM4 antibody

Restrictions: For Research Use only

Handling

Format: Lyophilized

Reconstitution: Lyophilized powder. Add distilled water for a 1 mg/mL concentration of OLFM4 antibody in PBS

Concentration: Lot specific

Buffer: PBS

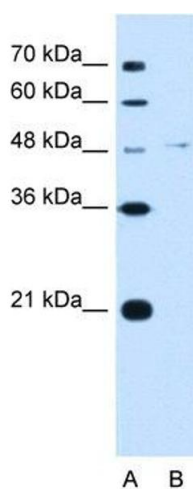
Handling Advice: Avoid repeated freeze/thaw cycles.

Dilute only prior to immediate use.

Storage: 4 °C/-20 °C

Storage Comment: Store at 2-8 °C for short periods. For longer periods of storage, store at -20 °C.

Images



Western Blotting

Image 1. OLFM4 antibody used at 5 µg/ml to detect target protein.