

Datasheet for ABIN630155 **anti-PSG5 antibody (N-Term)**



[Go to Product page](#)

1 Image

Overview

Quantity:	100 µg
Target:	PSG5
Binding Specificity:	N-Term
Reactivity:	Human
Host:	Rabbit
Clonality:	Polyclonal
Conjugate:	This PSG5 antibody is un-conjugated
Application:	Western Blotting (WB)

Product Details

Immunogen:	PSG5 antibody was raised using the N terminal of PSG5 corresponding to a region with amino acids QLMDLYHYITSYVVDGQINIYGPAYTGRETVYSNASLLIQNVTRDAGSY
Specificity:	PSG5 antibody was raised against the N terminal of PSG5
Purification:	Purified

Target Details

Target:	PSG5
Alternative Name:	PSG5 (PSG5 Products)
Background:	The pregnancy-specific beta 1 glycoprotein (PSG) is a group of heterogeneous proteins produced in large amounts by the human syncytiotrophoblast. They belong to the carcinoembryonic antigen (CEA) family. The function of PSG5 remains unknown.

Target Details

Molecular Weight: 37 kDa (MW of target protein)

Application Details

Application Notes: WB: 2.5 µg/mL
Optimal conditions should be determined by the investigator.

Comment: PSG5 Blocking Peptide, catalog no. 33R-7634, is also available for use as a blocking control in assays to test for specificity of this PSG5 antibody

Restrictions: For Research Use only

Handling

Format: Lyophilized

Reconstitution: Lyophilized powder. Add distilled water for a 1 mg/mL concentration of PSG5 antibody in PBS

Concentration: Lot specific

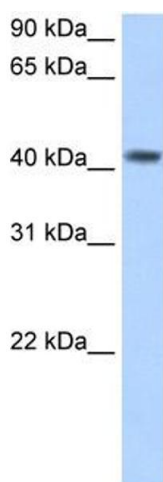
Buffer: PBS

Handling Advice: Avoid repeated freeze/thaw cycles.
Dilute only prior to immediate use.

Storage: 4 °C/-20 °C

Storage Comment: Store at 2-8 °C for short periods. For longer periods of storage, store at -20 °C.

Images



Western Blotting

Image 1. PSG5 antibody used at 2.5 ug/ml to detect target protein.