

Datasheet for ABIN630156
anti-PNLIP antibody (C-Term)



[Go to Product page](#)

1 Image

Overview

Quantity:	100 µg
Target:	PNLIP
Binding Specificity:	C-Term
Reactivity:	Human
Host:	Rabbit
Clonality:	Polyclonal
Application:	Western Blotting (WB)

Product Details

Immunogen:	Lipase antibody (Pancreatic) was raised using the C terminal of PNLIP corresponding to a region with amino acids SGKKVTGHILVSLFGNKGNSKQYEIFKGTLPDSTHSNEFDSVDVGDQLQ
Specificity:	Lipase antibody (Pancreatic) was raised against the C terminal of PNLIP
Purification:	Purified

Target Details

Target:	PNLIP
Alternative Name:	Pancreatic Lipase (PNLIP Products)
Background:	PNLIP is a member of the lipase gene family. It encodes a carboxyl esterase that hydrolyzes insoluble, emulsified triglycerides, and is essential for the efficient digestion of dietary fats. This gene is expressed specifically in the pancreas.
Molecular Weight:	51 kDa (MW of target protein)

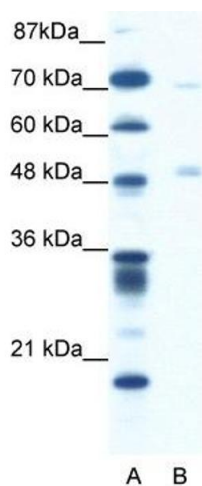
Application Details

Application Notes:	WB: 1.25 µg/mL Optimal conditions should be determined by the investigator.
Comment:	Lipase Blocking Peptide (Pancreatic), catalog no. 33R-8469, is also available for use as a blocking control in assays to test for specificity of this Lipase antibody (Pancreatic)
Restrictions:	For Research Use only

Handling

Format:	Lyophilized
Reconstitution:	Lyophilized powder. Add distilled water for a 1 mg/mL concentration of PNLIP antibody in PBS
Concentration:	Lot specific
Buffer:	PBS
Handling Advice:	Avoid repeated freeze/thaw cycles. Dilute only prior to immediate use.
Storage:	4 °C/-20 °C
Storage Comment:	Store at 2-8 °C for short periods. For longer periods of storage, store at -20 °C.

Images



Western Blotting

Image 1. Lipase antibody (Pancreatic) used at 1.25 ug/ml to detect target protein.