

## Datasheet for ABIN630160 **anti-SEMG1 antibody (N-Term)**

### 3 Images



[Go to Product page](#)

#### Overview

Quantity:	100 µg
Target:	SEMG1
Binding Specificity:	N-Term
Reactivity:	Human
Host:	Rabbit
Clonality:	Polyclonal
Conjugate:	This SEMG1 antibody is un-conjugated
Application:	Western Blotting (WB), Immunohistochemistry (IHC)

#### Product Details

Immunogen:	Semenogelin I antibody was raised using the N terminal of SEMG1 corresponding to a region with amino acids QK GKQQTESKGSFSIQYTYHVDANDHDQSRKSQQYDLNALHKTTKSQRHL
Specificity:	Semenogelin I antibody was raised against the N terminal of SEMG1
Purification:	Purified

#### Target Details

Target:	SEMG1
Alternative Name:	Semenogelin I ( <a href="#">SEMG1 Products</a> )
Background:	SEMG1 is the predominant protein in semen. The secreted protein is involved in the formation of a gel matrix that encases ejaculated spermatozoa. The prostate-specific antigen (PSA) protease processes this protein into smaller peptides, with each possibly having a separate

## Target Details

---

function. The proteolysis process breaks down the gel matrix and allows the spermatozoa to move more freely.

Molecular Weight: 51 kDa (MW of target protein)

## Application Details

---

Application Notes: WB: 1.25 µg/mL, IHC: 4-8 µg/mL  
Optimal conditions should be determined by the investigator.

Comment: Semenogelin I Blocking Peptide, catalog no. 33R-7601, is also available for use as a blocking control in assays to test for specificity of this Semenogelin I antibody

Restrictions: For Research Use only

## Handling

---

Format: Lyophilized

Reconstitution: Lyophilized powder. Add distilled water for a 1 mg/mL concentration of SEMG1 antibody in PBS

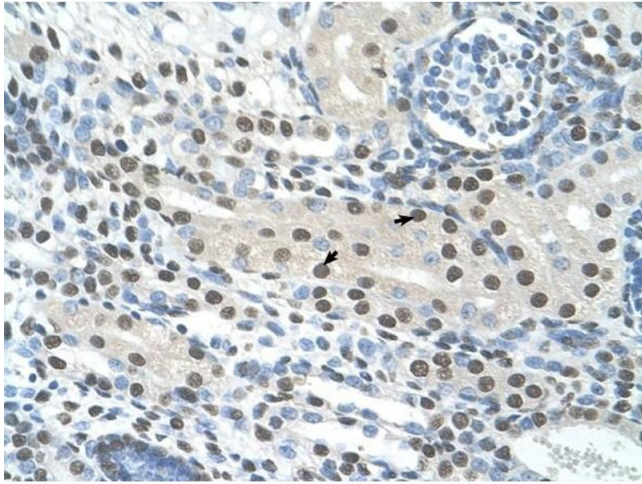
Concentration: Lot specific

Buffer: PBS

Handling Advice: Avoid repeated freeze/thaw cycles.  
Dilute only prior to immediate use.

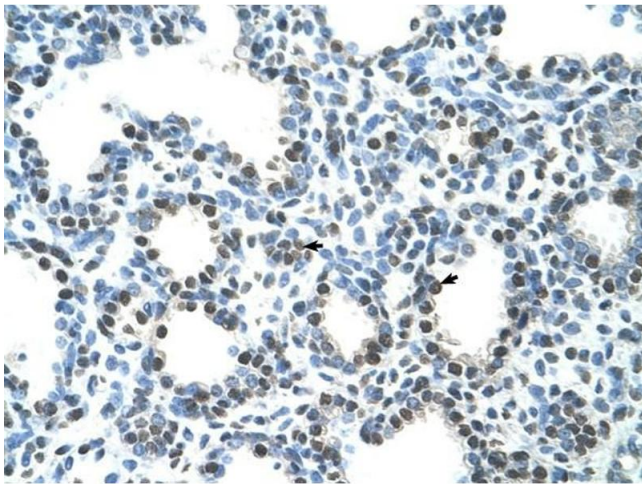
Storage: 4 °C/-20 °C

Storage Comment: Store at 2-8 °C for short periods. For longer periods of storage, store at -20 °C.



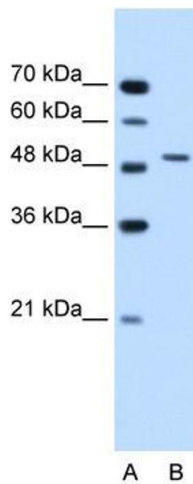
#### Immunohistochemistry

**Image 1.** Semenogelin I antibody was used for immunohistochemistry at a concentration of 4-8 ug/ml to stain Epithelial cells of renal tubule (arrows) in Human Kidney. Magnification is at 400X



#### Immunohistochemistry

**Image 2.** Semenogelin I antibody was used for immunohistochemistry at a concentration of 4-8 ug/ml to stain Alveolar cells (arrows) in Human Lung. Magnification is at 400X.



#### Western Blotting

**Image 3.** Semenogelin I antibody used at 1.25 ug/ml to detect target protein.