

Datasheet for ABIN630161
anti-RSAD2 antibody (C-Term)



[Go to Product page](#)

2 Images

Overview

Quantity:	100 µg
Target:	RSAD2
Binding Specificity:	C-Term
Reactivity:	Human, Mouse, Dog, Zebrafish (Danio rerio)
Host:	Rabbit
Clonality:	Polyclonal
Conjugate:	This RSAD2 antibody is un-conjugated
Application:	Western Blotting (WB), Immunohistochemistry (IHC)

Product Details

Immunogen:	RSAD2 antibody was raised using the C terminal of RSAD2 corresponding to a region with amino acids YLILDEYMRFLNCRKGRKDPSPKILVDVGVEEAIKFSGFDEKMFLKRGGKY
Specificity:	RSAD2 antibody was raised against the C terminal of RSAD2
Purification:	Purified

Target Details

Target:	RSAD2
Alternative Name:	RSAD2 (RSAD2 Products)
Background:	RSAD2 is a potential antiviral effector.
Molecular Weight:	40 kDa (MW of target protein)

Target Details

Pathways: [Regulation of Leukocyte Mediated Immunity](#), [Positive Regulation of Immune Effector Process](#), [Production of Molecular Mediator of Immune Response](#)

Application Details

Application Notes: WB: 5 µg/mL, IHC: 4-8 µg/mL
Optimal conditions should be determined by the investigator.

Comment: RSAD2 Blocking Peptide, catalog no. 33R-10171, is also available for use as a blocking control in assays to test for specificity of this RSAD2 antibody

Restrictions: For Research Use only

Handling

Format: Lyophilized

Reconstitution: Lyophilized powder. Add distilled water for a 1 mg/mL concentration of RSAD2 antibody in PBS

Concentration: Lot specific

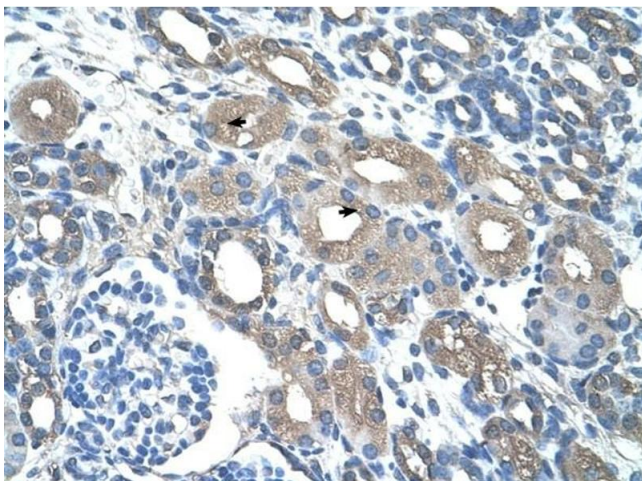
Buffer: PBS

Handling Advice: Avoid repeated freeze/thaw cycles.
Dilute only prior to immediate use.

Storage: 4 °C/-20 °C

Storage Comment: Store at 2-8 °C for short periods. For longer periods of storage, store at -20 °C.

Images



Immunohistochemistry

Image 1. RSAD2 antibody was used for immunohistochemistry at a concentration of 4-8 ug/ml to stain Epithelial cells of renal tubule (arrows) in Human Kidney. Magnification is at 400X



Western Blotting

Image 2. RSAD2 antibody used at 5 ug/ml to detect target protein.