

Datasheet for ABIN630164  
**anti-PNLIP antibody (C-Term)**



[Go to Product page](#)

2 Images

## Overview

|                      |                                                   |
|----------------------|---------------------------------------------------|
| Quantity:            | 100 µg                                            |
| Target:              | PNLIP                                             |
| Binding Specificity: | C-Term                                            |
| Reactivity:          | Human                                             |
| Host:                | Rabbit                                            |
| Clonality:           | Polyclonal                                        |
| Application:         | Western Blotting (WB), Immunohistochemistry (IHC) |

## Product Details

|               |                                                                                                                                                                           |
|---------------|---------------------------------------------------------------------------------------------------------------------------------------------------------------------------|
| Immunogen:    | Lipase antibody (Pancreatic) was raised using the C terminal of PNLIP corresponding to a region with amino acids<br>GHYADRYPGKTNDVGQKFYLDTGDA SNFARWRYKVS VTL SGKKVTGHILV |
| Specificity:  | Lipase antibody (Pancreatic) was raised against the C terminal of PNLIP                                                                                                   |
| Purification: | Purified                                                                                                                                                                  |

## Target Details

|                   |                                                                                                                                                                                                                                            |
|-------------------|--------------------------------------------------------------------------------------------------------------------------------------------------------------------------------------------------------------------------------------------|
| Target:           | PNLIP                                                                                                                                                                                                                                      |
| Alternative Name: | Pancreatic Lipase ( <a href="#">PNLIP Products</a> )                                                                                                                                                                                       |
| Background:       | PNLIP is a member of the lipase gene family. PNLIP is a carboxyl esterase that hydrolyzes insoluble, emulsified triglycerides, and is essential for the efficient digestion of dietary fats. It is expressed specifically in the pancreas. |

## Target Details

Molecular Weight: 51 kDa (MW of target protein)

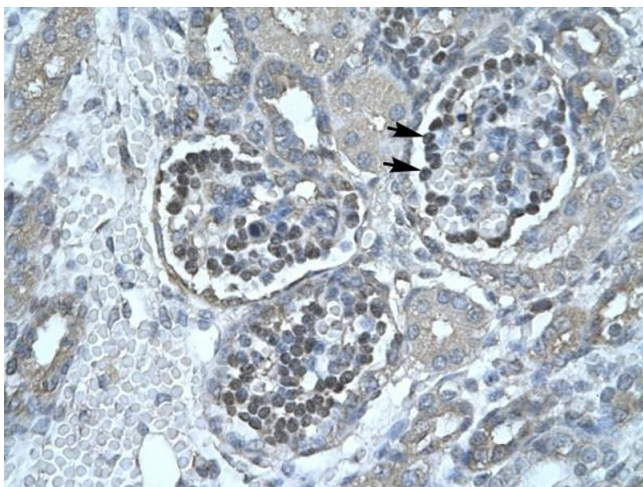
## Application Details

|                    |                                                                                                                                                                                    |
|--------------------|------------------------------------------------------------------------------------------------------------------------------------------------------------------------------------|
| Application Notes: | WB: 1 µg/mL, IHC: 4-8 µg/mL<br>Optimal conditions should be determined by the investigator.                                                                                        |
| Comment:           | Lipase Blocking Peptide (Pancreatic), catalog no. 33R-3320, is also available for use as a blocking control in assays to test for specificity of this Lipase antibody (Pancreatic) |
| Restrictions:      | For Research Use only                                                                                                                                                              |

## Handling

|                  |                                                                                              |
|------------------|----------------------------------------------------------------------------------------------|
| Format:          | Lyophilized                                                                                  |
| Reconstitution:  | Lyophilized powder. Add distilled water for a 1 mg/mL concentration of PNLIP antibody in PBS |
| Concentration:   | Lot specific                                                                                 |
| Buffer:          | PBS                                                                                          |
| Handling Advice: | Avoid repeated freeze/thaw cycles.<br>Dilute only prior to immediate use.                    |
| Storage:         | 4 °C/-20 °C                                                                                  |
| Storage Comment: | Store at 2-8 °C for short periods. For longer periods of storage, store at -20 °C.           |

## Images



### Immunohistochemistry

**Image 1.** Lipase antibody (Pancreatic) was used for immunohistochemistry at a concentration of 4-8 ug/ml to stain Epithelial cells of renal corpuscle (Indicated with Arrows) in Human Kidney. Magnification is at 400X



Western Blotting

**Image 2.** Lipase antibody (Pancreatic) used at 1 ug/ml to detect target protein.